

Fig. A - Clamp - Front Half
For 5" Pipe
(Cast Iron) Pattern No. 3946

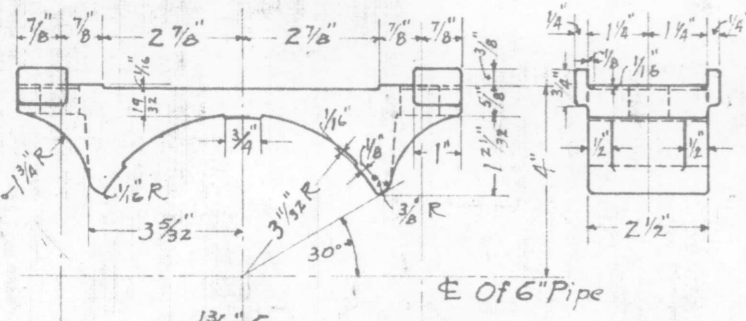


Fig. C - Clamp - Front Half
For 6" Pipe
(Cast Iron) Pattern No. 3947

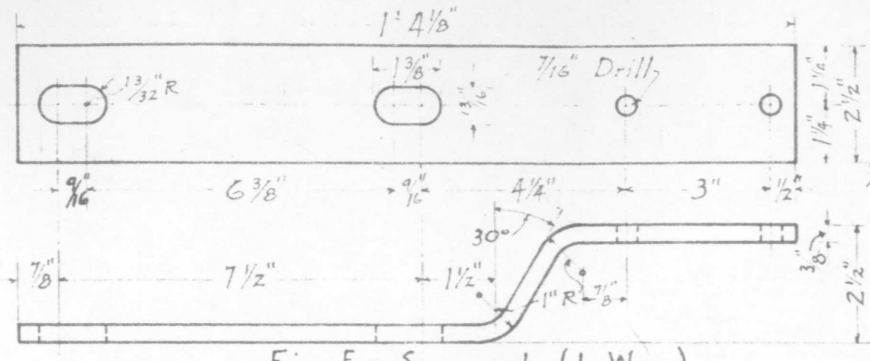


Fig. E - Support (1-Way)
(O.H. Steel)

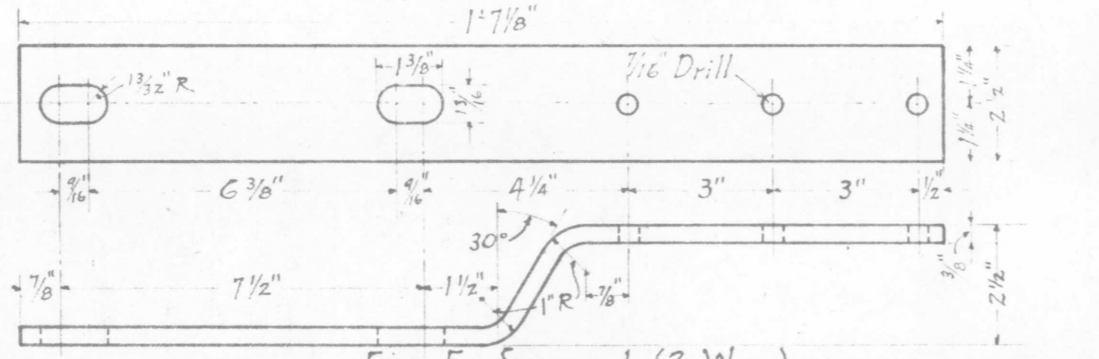


Fig. F - Support (2 Way)
(O.H. Steel)

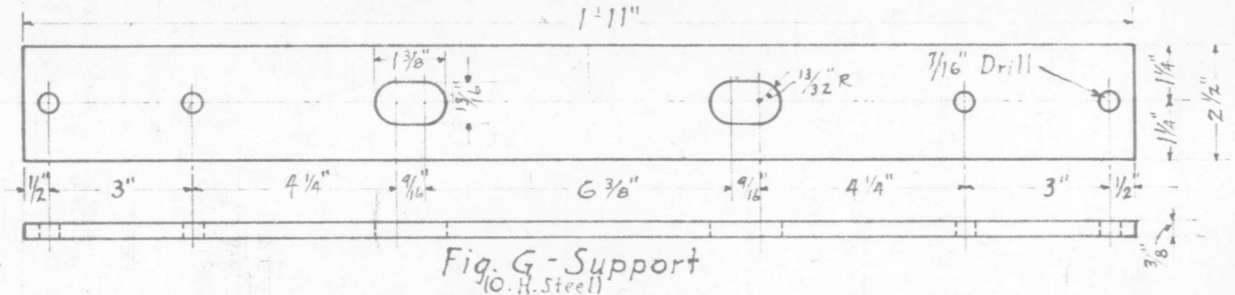


Fig. G - Support
(O.H. Steel)

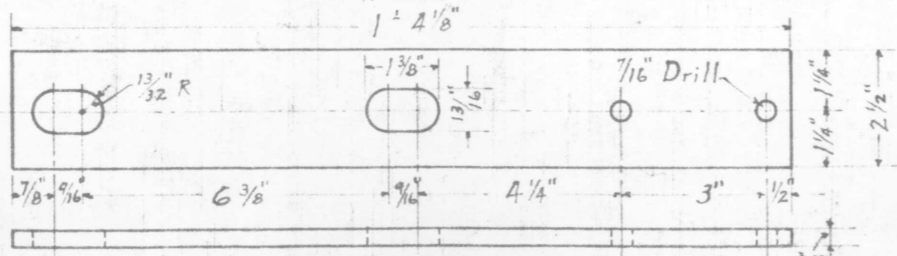


Fig. H - Support (1-Way)
(O.H. Steel)

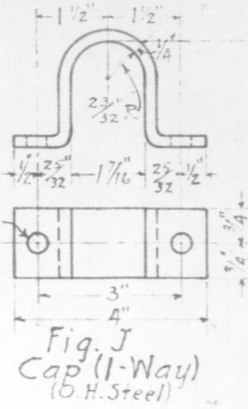


Fig. J - Cap (1-Way)
(O.H. Steel)

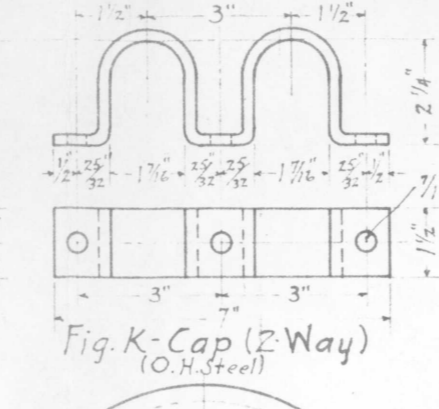


Fig. K - Cap (2-Way)
(O.H. Steel)

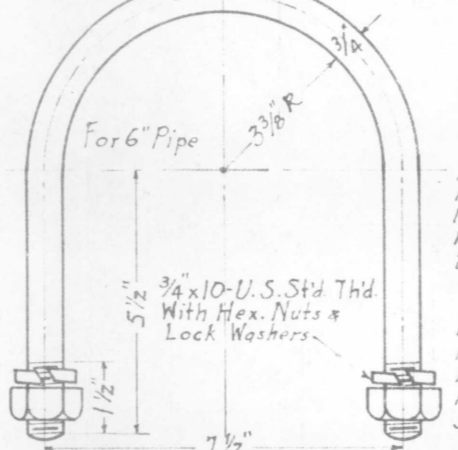


Fig. D - U Bolt
(O.H. Steel)

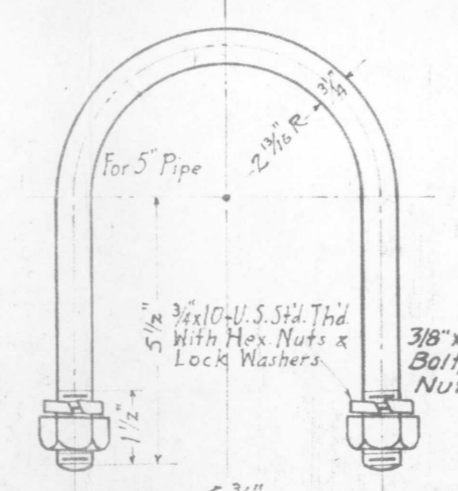


Fig. B - U Bolt
(O.H. Steel)

BILL OF MATERIALS
CLAMPS & GUIDES FOR MECH. SIGNALS
ASSEMBLY FIG. L

- 1-Clamp, Front Half, Fig. A
- 1-U Bolt, Fig. B
- 1-Support, (1-way) Fig. E.
- 1-Cap, (1-way) Fig. J
- 2- 3/8" x 1" Sq. Hd. Bolt, with Hex. Nut.

ASSEMBLY FIG. M

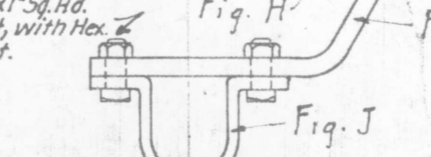
- 1-Clamp, Front Half, Fig. A.
- 1-U Bolt, Fig. B
- 1-Support (2-way) Fig. F.
- 1-Cap (2-way) Fig. K.
- 3- 3/8" x 1" Sq. Hd. Bolt, Hex. Nut.

ASSEMBLY FIG. N.

- Same as Fig. L, except clamp to be Fig. C, & U-Bolt to be Fig. D.

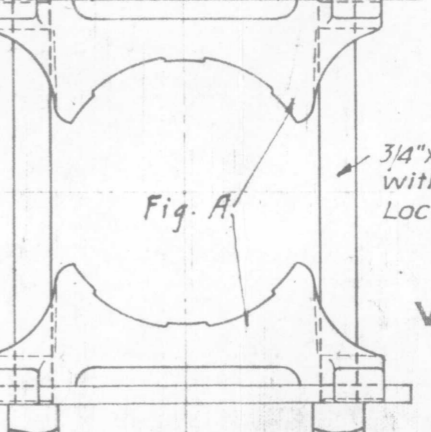
ASSEMBLY FIG. O.

- Same as Fig. M, except clamp to be Fig. G & U-Bolt to be Fig. D.



ASSEMBLY FIG. S

- SAME AS FIG. M, EXCEPT CAP (2-WAY) TO BE (1-WAY) FIG. J. AND 3- 3/8" X 1" BOLTS TO BE 2- 3/8" X 1" BOLTS.



Assemblies
Fig. Q - For 5" Pipe
R - " 5"

Note: Taken from R.S.A. Drg's. 1021, 1022 and 1023.

- Assemblies
- Fig. L - For 5" Pipe
 - " M - " 5 "
 - " N - " 6 "
 - " O - " 6 "
 - " P - " 6 "
 - " S - " 5 "

- ASSEMBLY FIG. Q**
- 2-Clamps, Front Half, Fig. A.
 - 2- 3/4" x 10" Sq. Hd. Bolt, Hex. Nut & Lock Washer
 - 2-Supports (1-way) Fig. E.
 - 2-Caps, (1-way) Fig. J.
 - 4- 3/8" x 1" Sq. Hd. Bolt, Hex. Nut.

- ASSEMBLY FIG. R**
- Same as Fig. Q, except Supports (1-way) to be Fig. H.

BILL OF MATERIALS
CLAMPS & GUIDES FOR T.O. SIGNALS
ASSEMBLY FIG. P

- 1-Clamp, Front Half, Fig. C.
- 1-U Bolt, Fig. D.
- 1-Support Fig. G.
- 2-Caps (1-way) Fig. J
- 4- 3/8" x 1" Sq. Hd. Bolt, Hex. Nut.

- ASSEMBLY FIG. Q**
- 2-Clamps, Front Half, Fig. A.
 - 2- 3/4" x 10" Sq. Hd. Bolt, Hex. Nut & Lock Washer
 - 2-Supports (1-way) Fig. E.
 - 2-Caps, (1-way) Fig. J.
 - 4- 3/8" x 1" Sq. Hd. Bolt, Hex. Nut.

- ASSEMBLY FIG. R**
- Same as Fig. Q, except Supports (1-way) to be Fig. H.

G. N. RY.
PLAN OF STANDARD
CLAMPS AND GUIDES FOR
VERTICAL CONNECTIONS ON SIGNAL

OFFICE OF SIGNAL ENGINEER
SCALE 1/4 IN. = 1 IN. JANUARY 1918

REVISED 4-26-20.
FIG. S. ADDED.

Drawn by M. D. W.
Checked by J. R. R.
Approved by C. S.
Signal Engr.
1-28-1918
167-73A