

**G. N. RY.**  
 PLAN OF STANDARD  
**RIGHT ANGLE CRANKS**  
 OFFICE OF SIGNAL ENGINEER  
 SCALE 3/16 IN. = 1 IN. FEBRUARY 1918

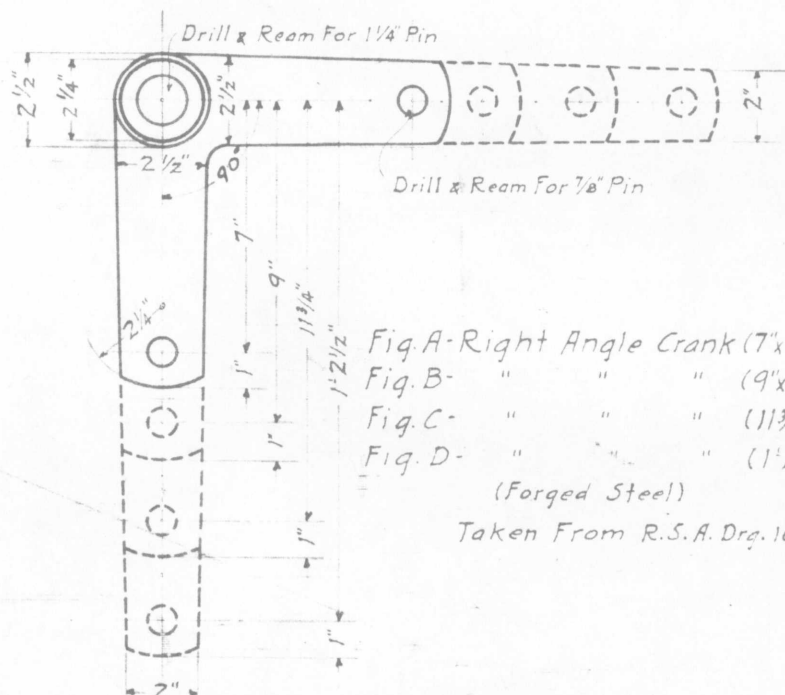
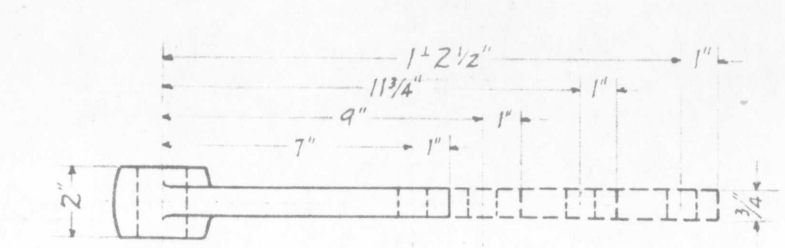


Fig. A - Right Angle Crank (7x7)  
 Fig. B - " " " (9x9)  
 Fig. C - " " " (11 3/4 x 11 3/4)  
 Fig. D - " " " (1 1/2 x 1 1/2)  
 (Forged Steel)  
 Taken From R.S.A. Drg. 1007

Note:-  
 Fig. A Is R.S.A 10074  
 Fig. B " " " " 10075  
 Fig. C " " " " 10076  
 Fig. D " " " " 10077

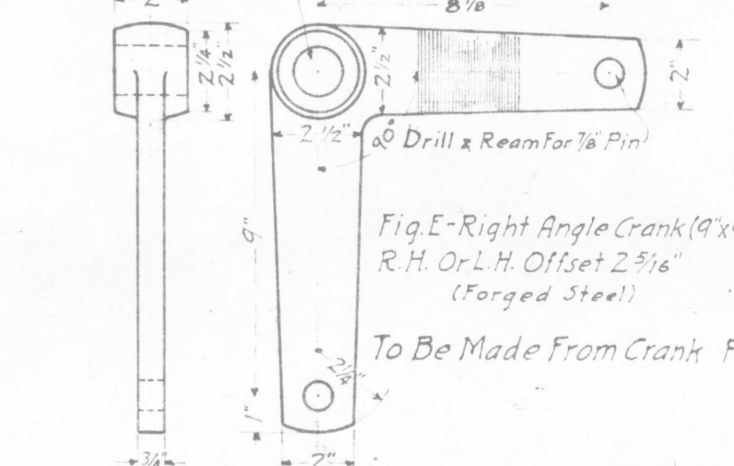
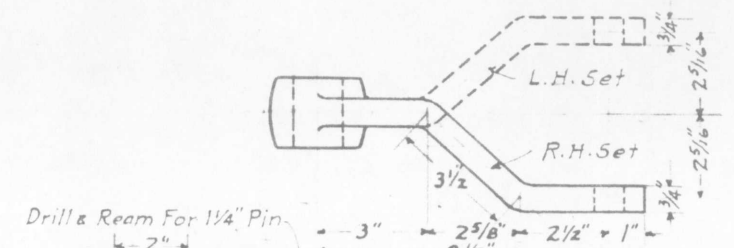


Fig. E - Right Angle Crank (9x9)  
 R.H. Or L.H. Offset 2 5/16"  
 (Forged Steel)  
 To Be Made From Crank Fig. B

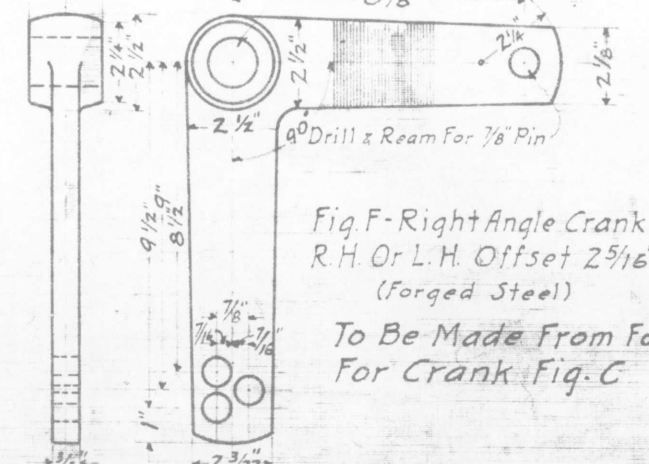
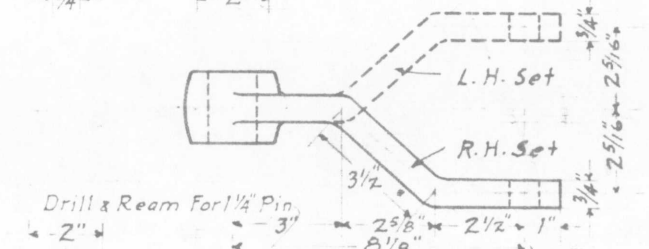


Fig. F - Right Angle Crank (9x9 1/2)  
 R.H. Or L.H. Offset 2 5/16"  
 (Forged Steel)  
 To Be Made From Forging  
 For Crank Fig. C

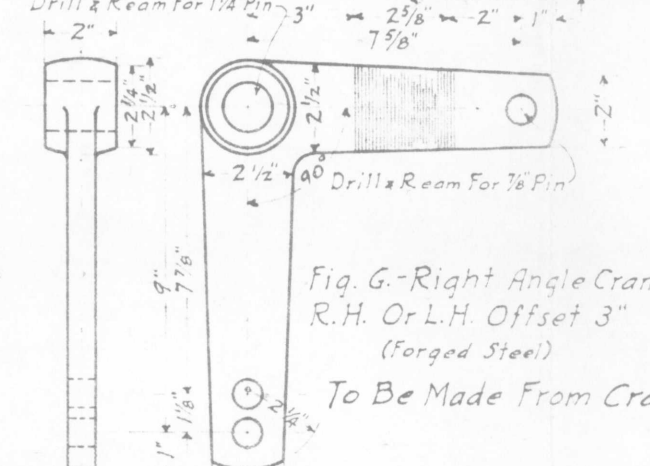
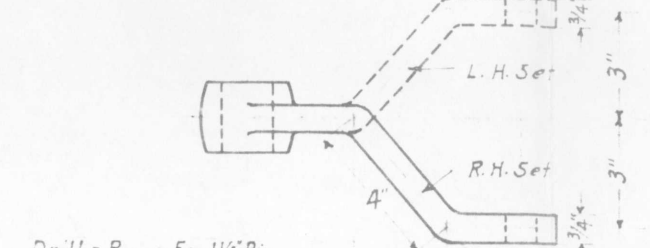


Fig. G - Right Angle Crank (9x9)  
 R.H. Or L.H. Offset 3"  
 (Forged Steel)  
 To Be Made From Crank Fig. B

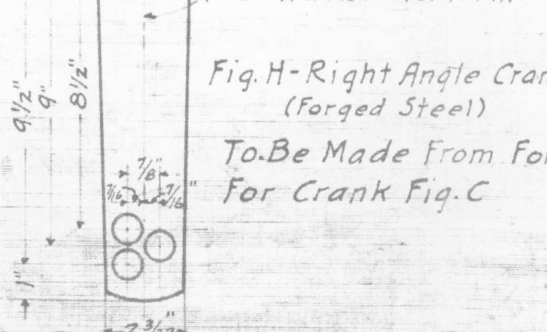
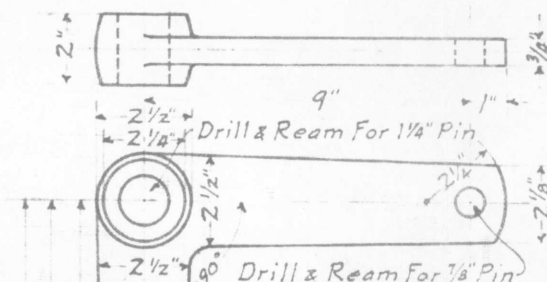


Fig. H - Right Angle Crank (9x9 1/2)  
 (Forged Steel)  
 To Be Made From Forging  
 For Crank Fig. C

Drawn by M. D. W.  
 Checked by J. P. R.  
 Approved by C. S.  
 Signal Engr.  
 2-13-1918  
 167-76