

B

G. N. RY.
 PLAN OF STANDARD
**SOLID ROD, EYE ROD
 AND ADJUSTABLE LINKS**
 OFFICE OF SIGNAL ENGINEER
 SCALE 1/4 IN. = 1 IN. FEBRUARY 1918

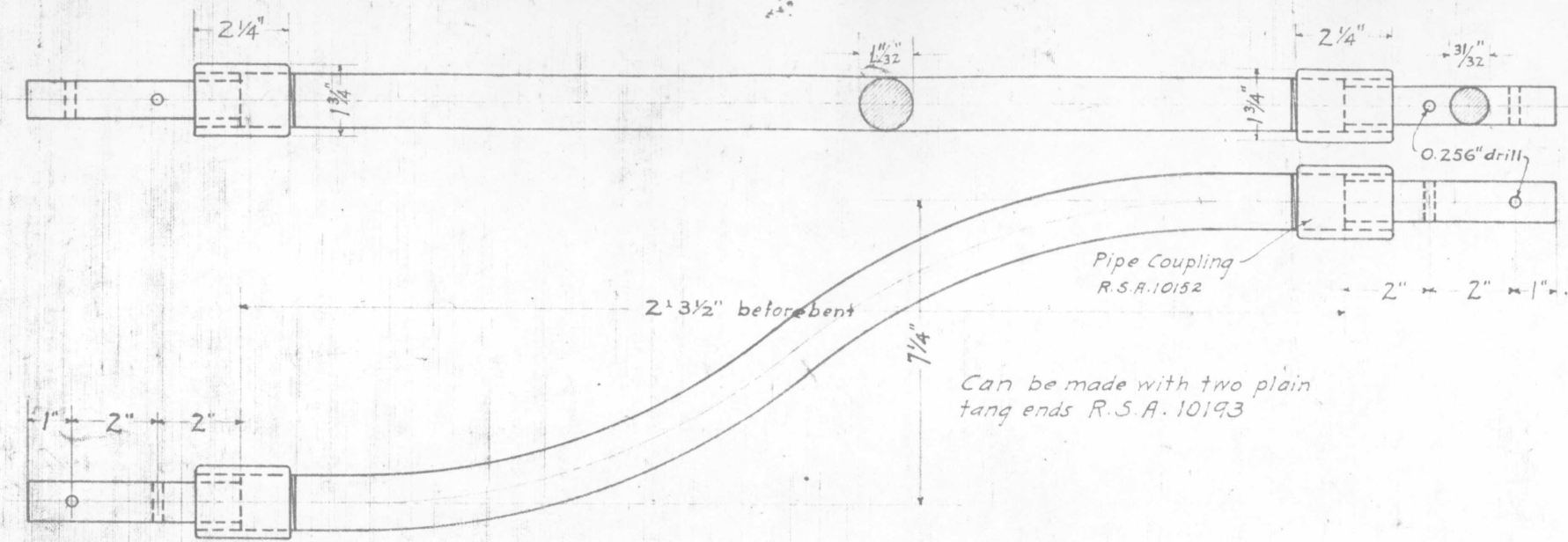
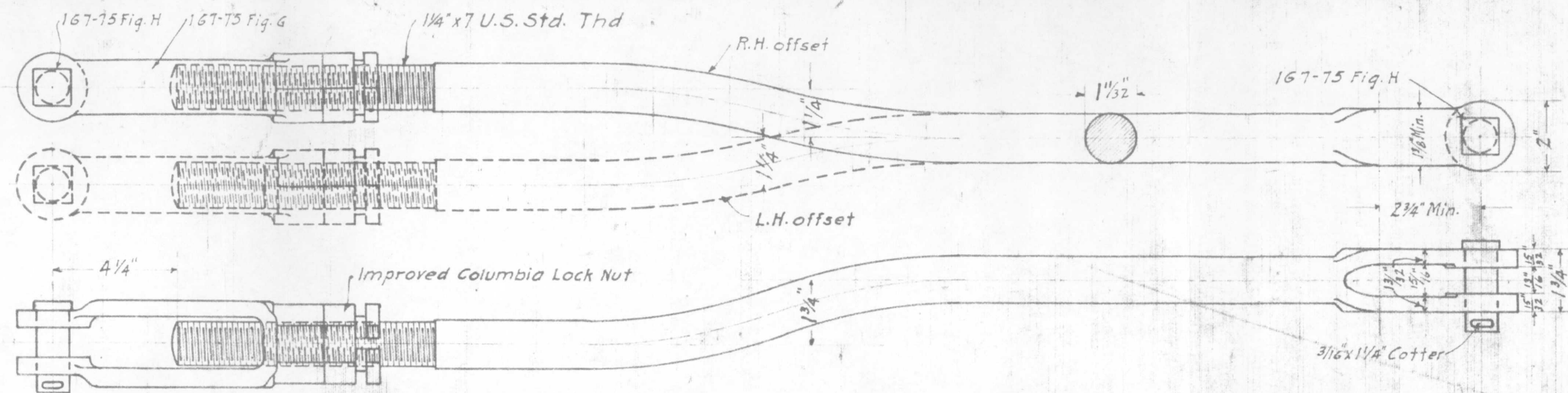


Fig. A - Solid connection 7/8" offset tang ends (O.H. Steel)



Adjustable link 1/4" and 1 3/4" offsets (O.H. Steel)

- Fig. D - Long adjustable link with 1/4" R.H. offset
- Fig. D1 - Long adjustable link with 1/4" L.H. offset
- Fig. D2 - Short adjustable link with 1/4" R.H. offset
- Fig. D3 - Short adjustable link with 1/4" L.H. offset

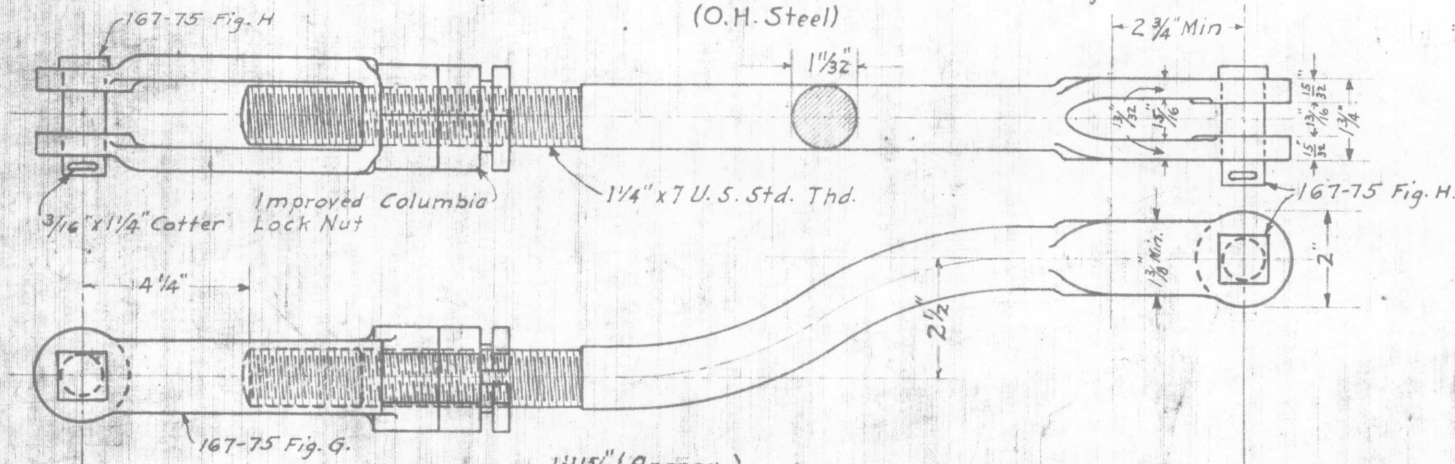


Fig. B - Adjustable link 2 1/2" offset (O.H. Steel)
 To be made from straight adjustable link R.S.A. Std. 2'-0" Centers

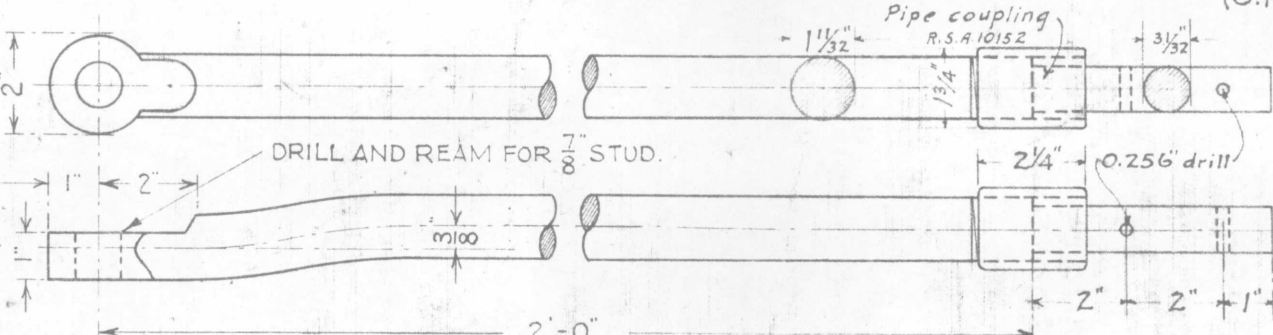


FIG. E. SPECTACLE EYE-ROD (TANG END)
 O.H. STEEL.
 R.S.A. 11951.

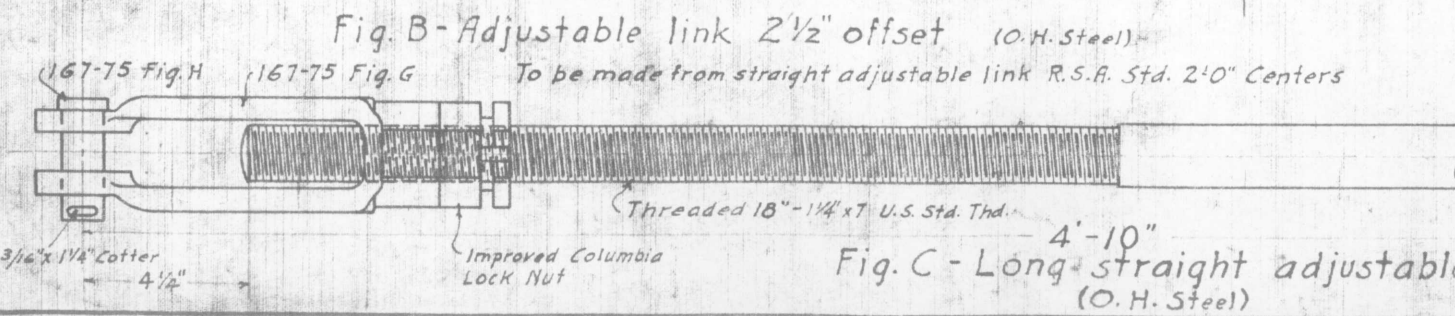


Fig. C - Long straight adjustable link (O.H. Steel)

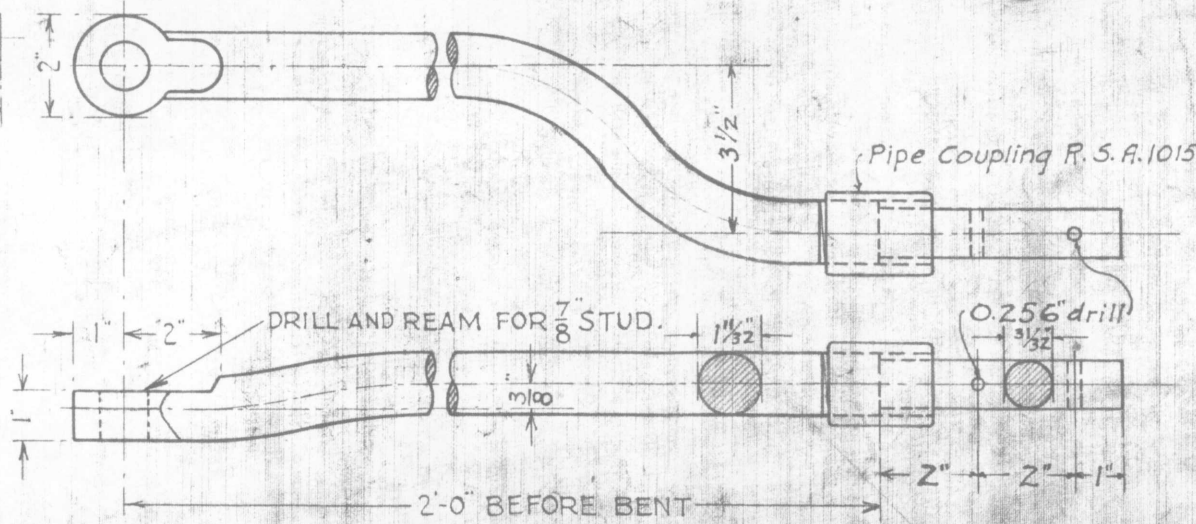


FIG. F. SPECTACLE EYE ROD 3 1/2" OFF-SET (TANG END)
 (FORMED FROM EYE ROD FIG. E.)

NOTE "A." EYE RODS FIG. E AND F INCREASED FROM 1'-0" TO 2'-0" IN LENGTH. 3/8" OFFSET AS SHOWN ALSO ADDED.

Drawn by M. D. W.
 Checked by J. H. R.
 Approved by C. S. Signal Engr.
 2-7-1918