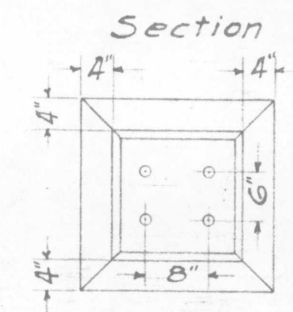
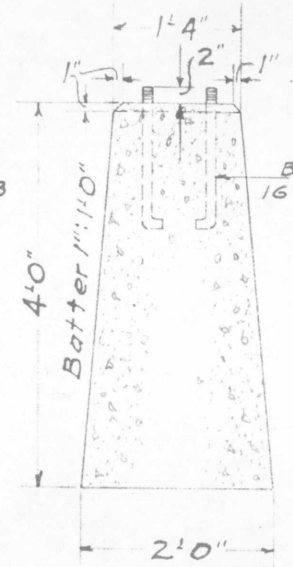


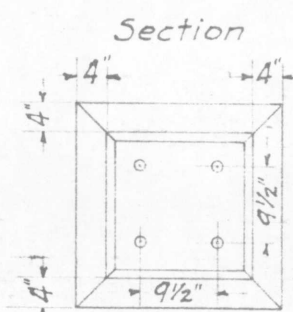
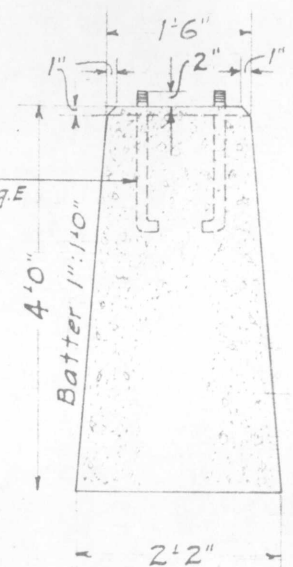
Plan  
Fig. A - Signal Foundation

Boils  
167-19 Fig. B

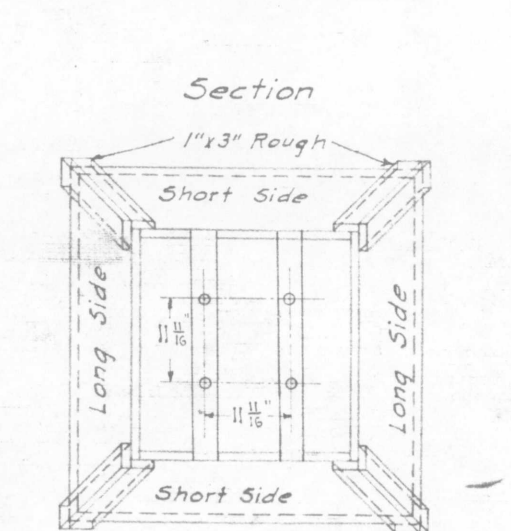
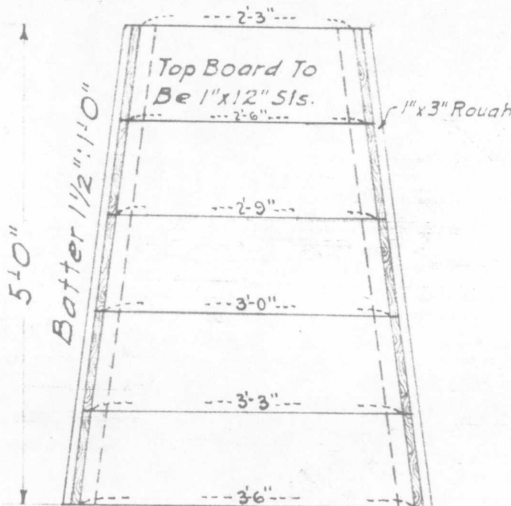


Plan  
Fig. B  
Cable Post Foundation  
Using 6"x8" Centers  
For Anchor Bolts

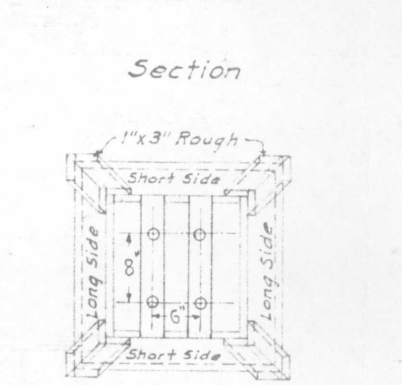
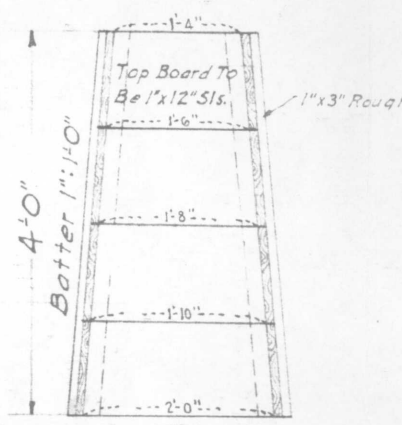
Boils  
167-19 Fig. E



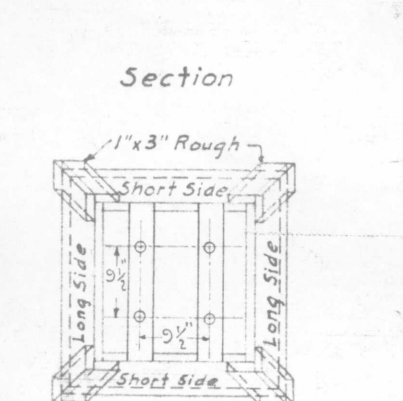
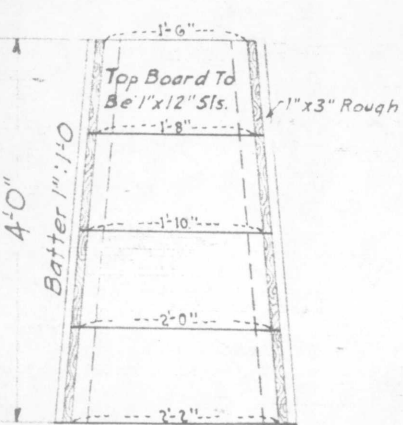
Plan  
Fig. C  
Cable Post Foundation  
Using R.S.A. Dimensions  
For Anchor Bolts



Plan  
Fig. D - Form For  
Foundation Fig. A



Section  
Plan  
Fig. E - Form For  
Foundation Fig. B



Section  
Plan  
Fig. F - Form For  
Foundation Fig. C

NOTE: ADD 2" TO FRONT BOARD DIMENSIONS TO OBTAIN  
CORRESPONDING SIDE BOARD DIMENSIONS.

C

**G. N. RY.**  
PLAN OF STANDARD  
**SIGNAL AND CABLE POST  
FOUNDATIONS AND FORMS**  
OFFICE OF SIGNAL ENGINEER  
SCALE 1/2 IN. = 1 FT. MARCH 1918

Drawn by M. D. W.  
Checked by C.B.C.  
Approved by C.A.S.  
Signal Engr.  
8-27-1923  
167-80