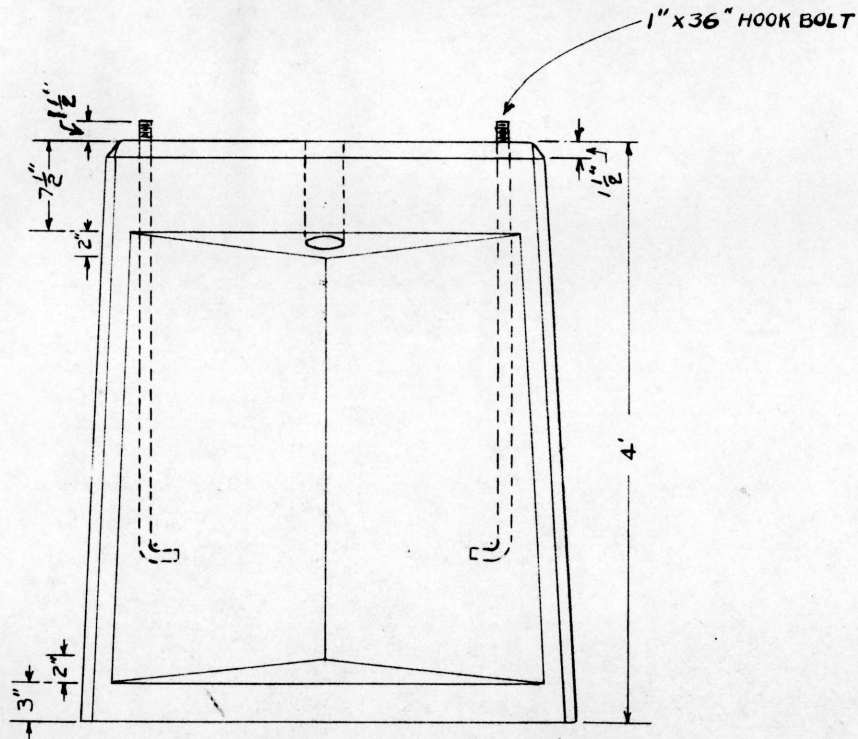


A



NOTE: FOUNDATIONS SHALL BE MADE OF PORTLAND CEMENT CONCRETE IN ACCORDANCE WITH AMERICAN RAILWAY ENGINEERING ASSOCIATION SPECIFICATION. COARSE AGGREGATE SHALL CONSIST OF 3/4 INCH MAXIMUM SIZE STONE OR GRAVEL. NOT LESS THAN 6 SACKS OF CEMENT SHALL BE USED PER CUBIC YARD OF CONCRETE. WATER CEMENT RATIO TO PRODUCE A COMPRESSIVE STRENGTH OF 2500 POUNDS PER SQUARE INCH AFTER 28 DAYS SHALL BE USED. EXPOSED ANCHOR BOLT THREADS TO BE COVERED WITH FROST NO-RUST JOURNAL GREASE.

FOUNDATION FOR CASE  
SCALE 3/4" = 1'

G. N. RY.  
FOUNDATION FOR  
CASE  
OFFICE OF SUPT OF SIGNALS  
NOV. 23, 1955

Drawn by WGP. JFF  
Checked by J.R.T.  
Approved by R.A.G.  
Sup't. of Signals

167-80D