

G. N. RY.
PLAN OF STANDARD
STRAP PIPE CARRIER

OFFICE OF SIGNAL ENGINEER
 SCALE IN 1:1 IN FEBRUARY 1918

| |
|----------------------------------|
| <i>BILL OF MATERIAL - FIG. D</i> |
| 1-Stand-Fig. A |
| 1-Sheave-Fig. B-Pattern No. |
| 1-Pin-Fig. C |
| 2-3/16" x 1" Cotter Pins |

MS 10748

Fig. A-Stand
(O. H. Steel)

Fig. B-Sheave
(Cast Iron)

Fig. C-Pin
(C. R. Steel)

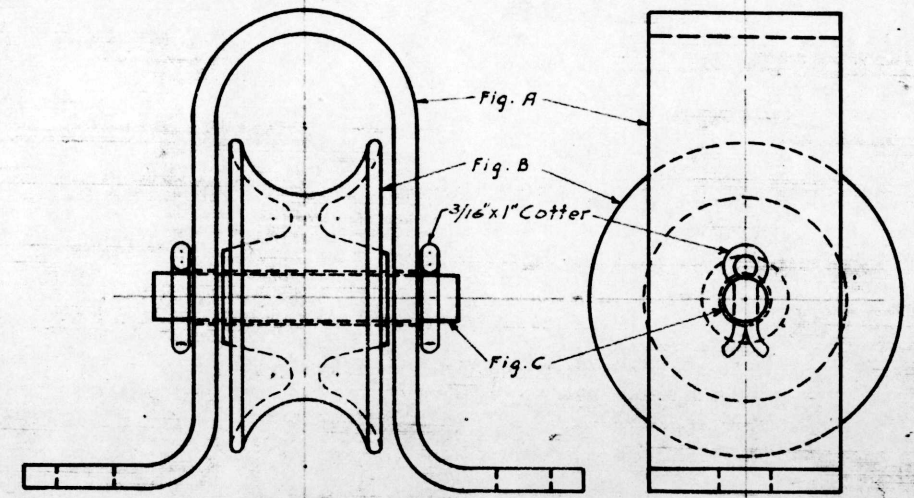


Fig. D-Assembly Of Strap Pipe Carrier

Drawn by *M.D.W.*
 Checked by *J.P.C.*
 Approved by *C.S.*
 Signal Engr.
 2-28-1918
 167-82

Taken From R.S.A. Drg. 1071