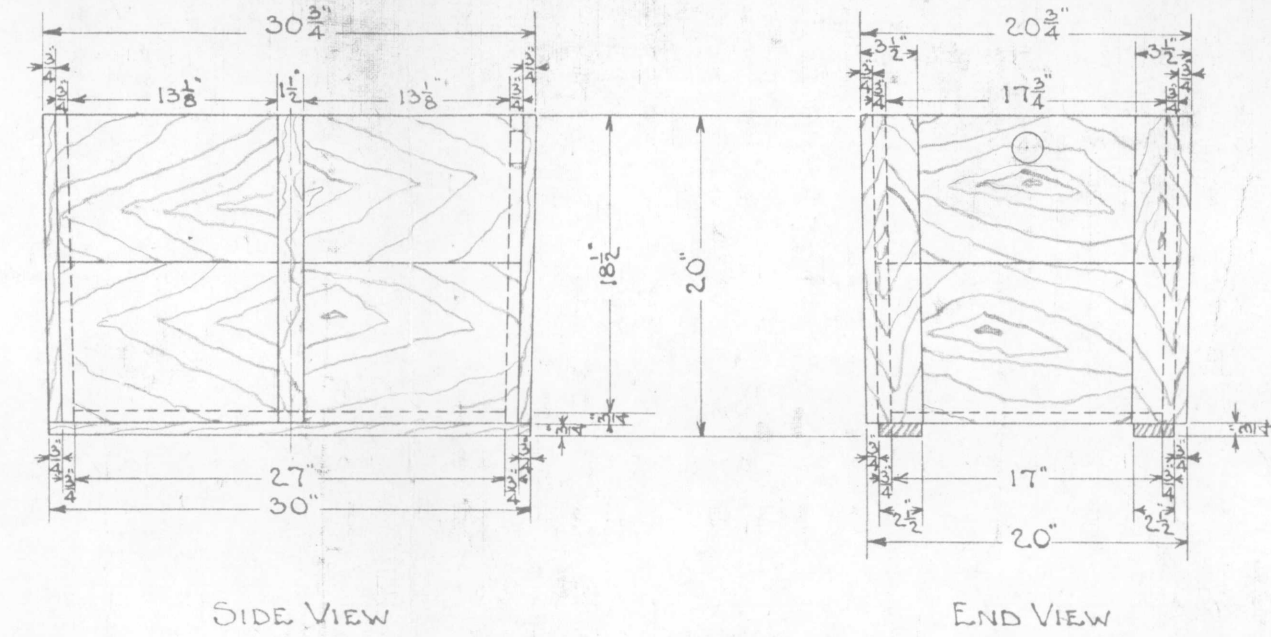
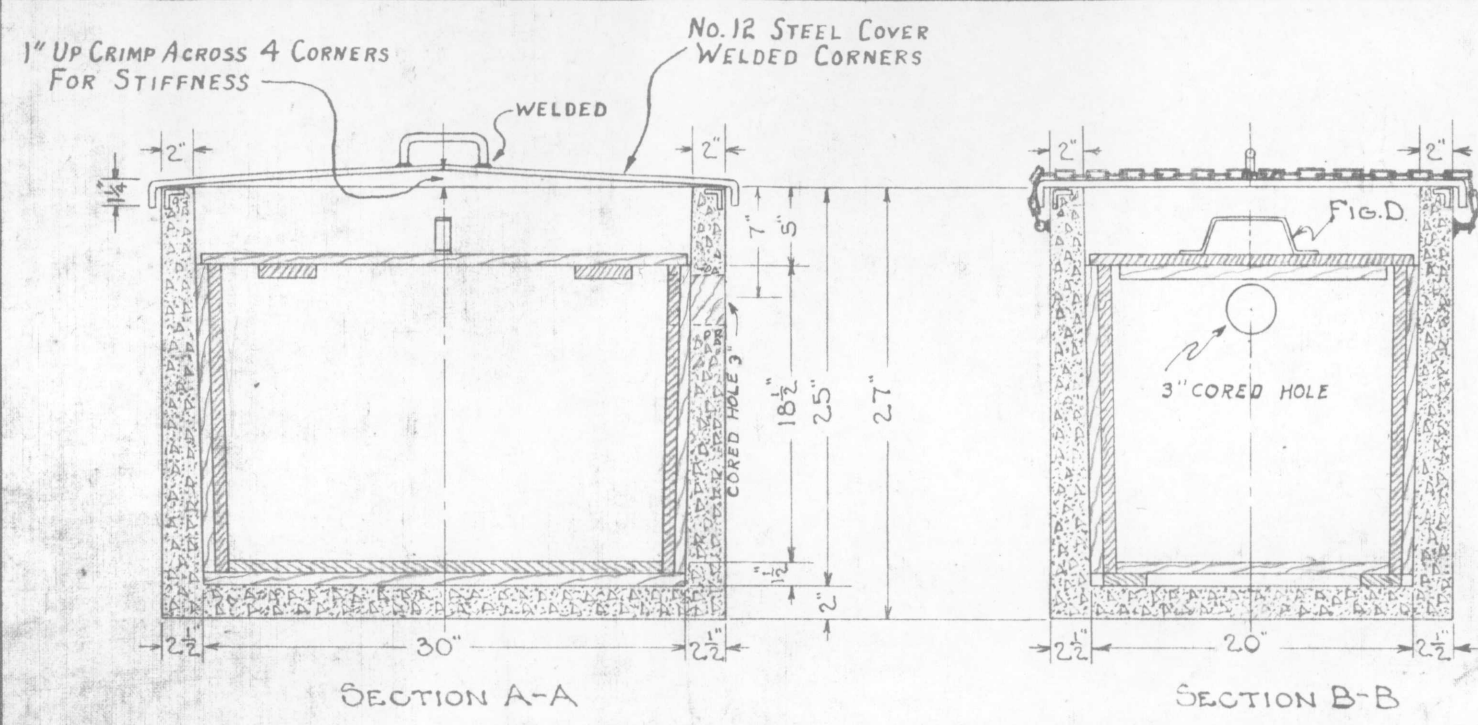
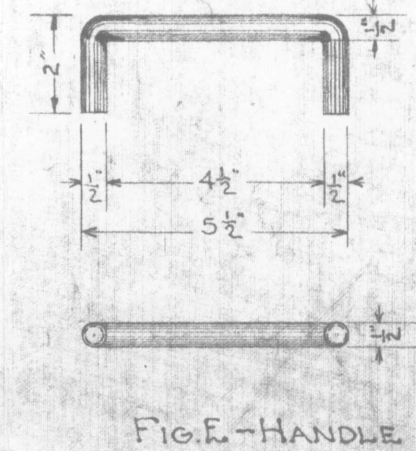
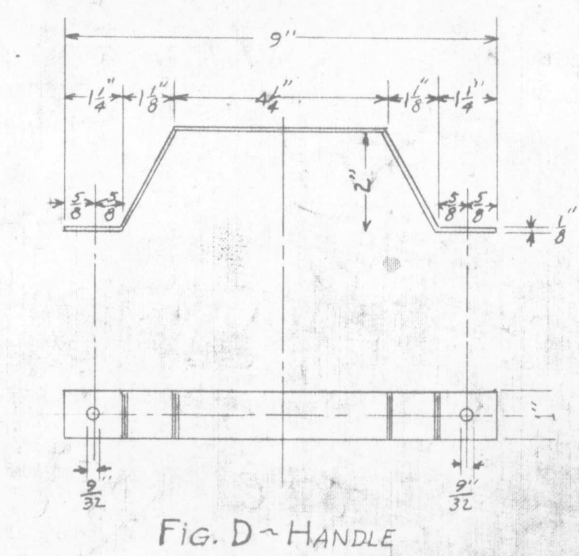
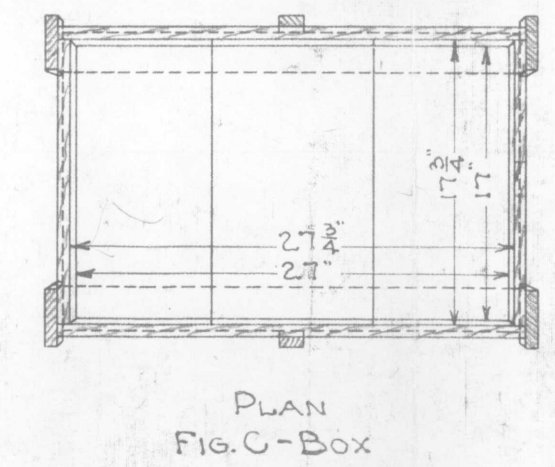
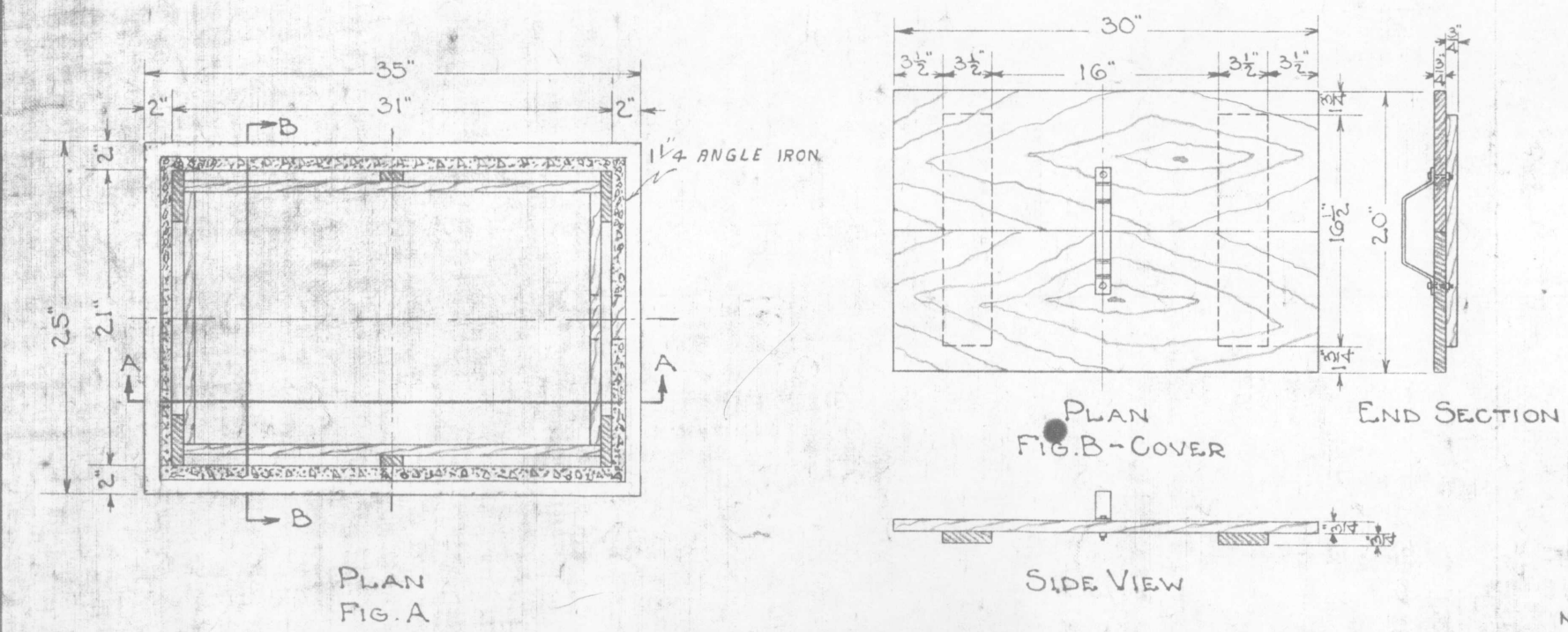
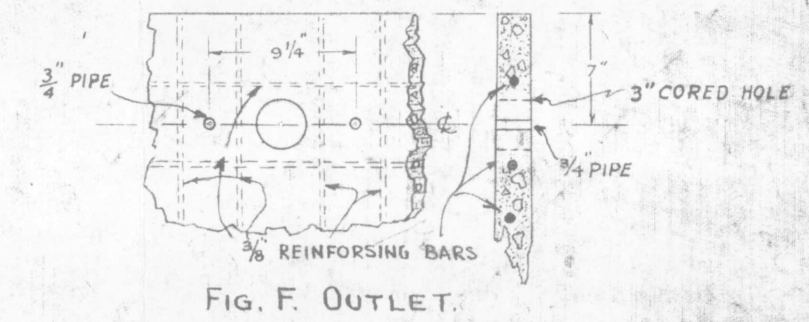


A



G. N. RY.  
 PLAN OF STANDARD  
**CONCRETE TRACK BATTERY BOX**  
 OFFICE OF SUPT. OF SIGNALS ST. PAUL, MINN.  
 SCALE VARIOUS  
 AUG. 1924



NOTE: USE 3/4 SHIPLAP LINING THROUGHOUT.

{With Two 1/4 STOVE BOLTS, NUTS AND WASHERS.}

3-26-5611-5-52	DRAWN BY <i>TRP</i>
8-13-45 2-8-45	CHECKED BY <i>CBC</i>
REVISED 1-29-41	APPROVED BY <i>CS</i>
	SUPT. SIGNALS
	8-6-24
	167-85B

GNRHS Archives 2018