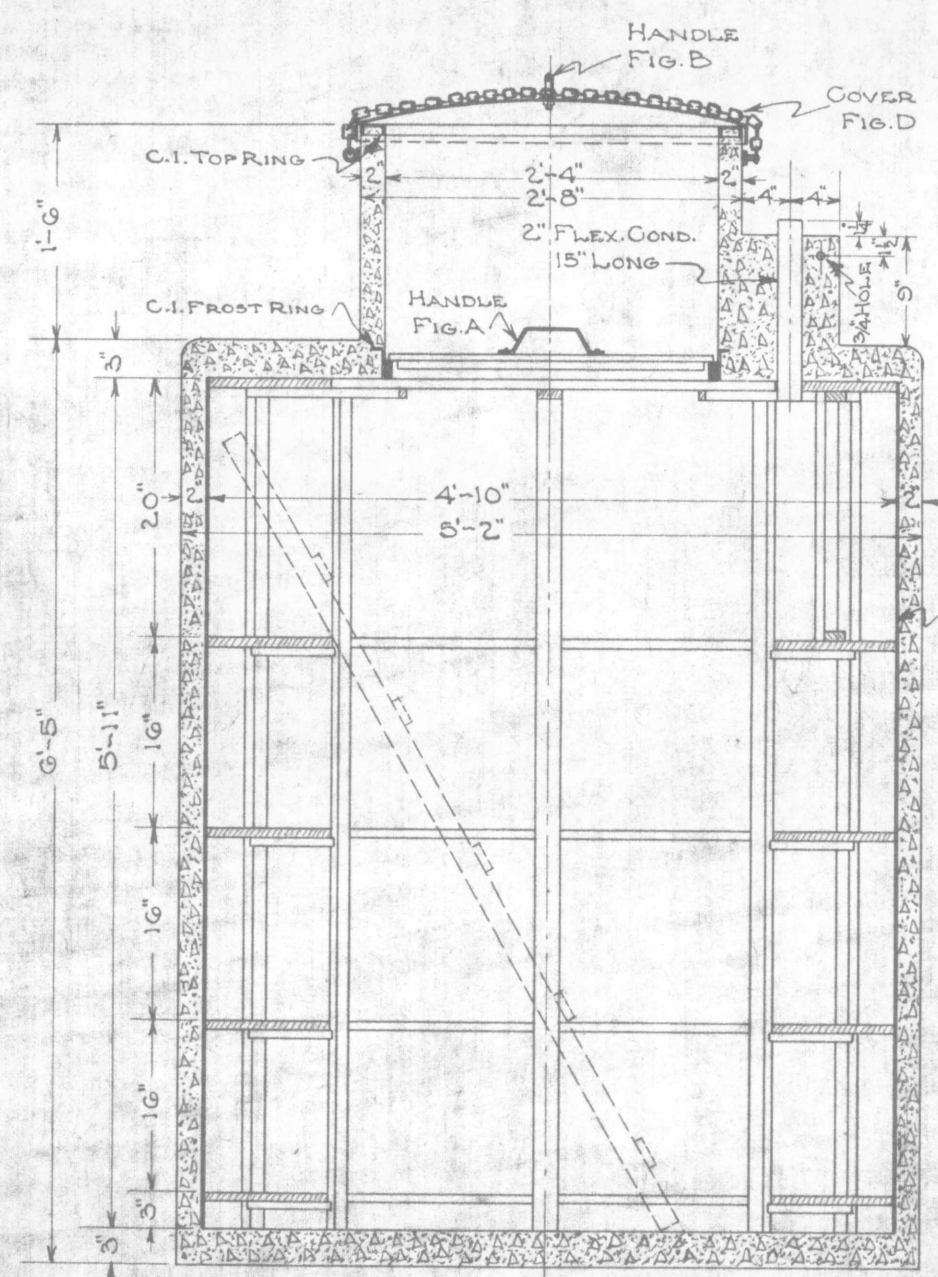


**G. N. RY.**  
 PLAN OF STANDARD  
**80 CELL CAPACITY BATTERY WELL**  
 OFFICE OF SUPT OF SIGNALS ST PAUL, MINN.  
 SCALE VARIOUS OCT. 1924



SECTION A-A

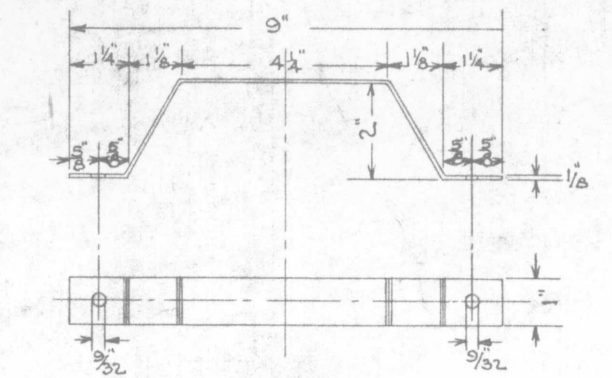


FIG. A-HANDLE  
 {WITH TWO 1/4" STOVE BOLTS, NUTS AND WASHERS}

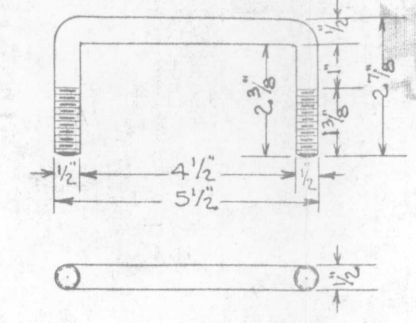


FIG. B-HANDLE  
 {STD U.S. THREAD WITH FOUR 1/2" HEX. NUTS}

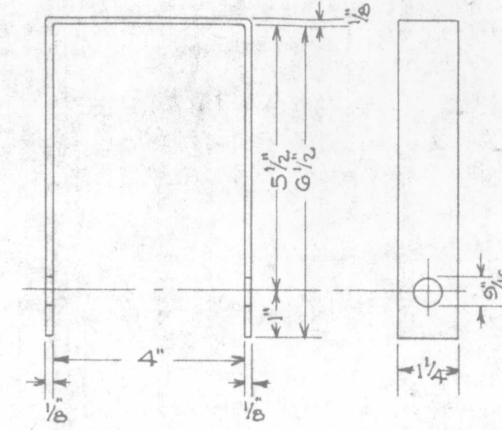
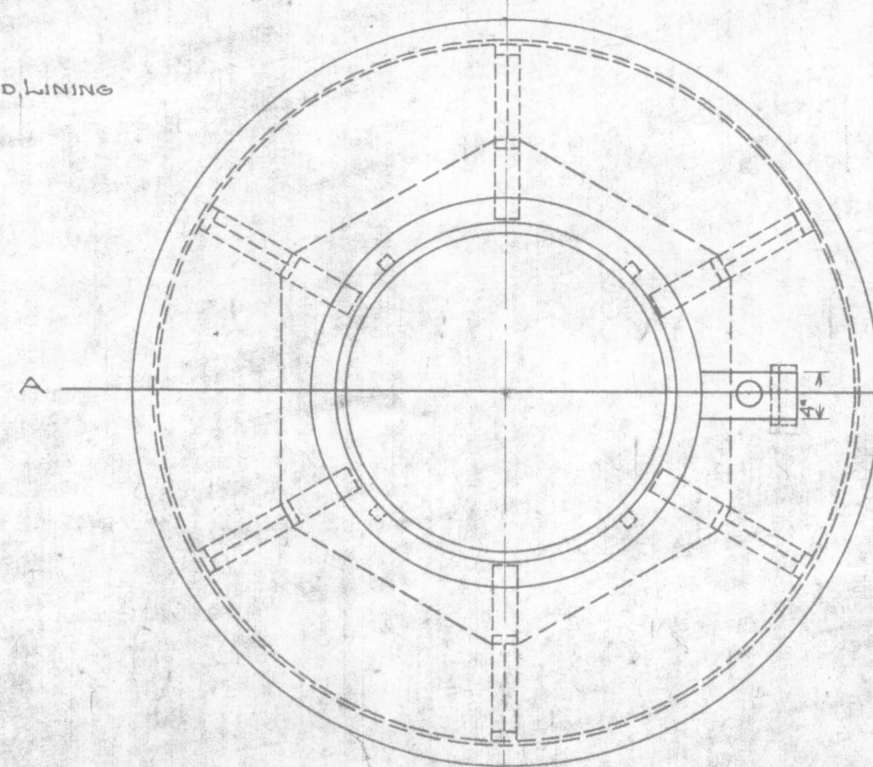
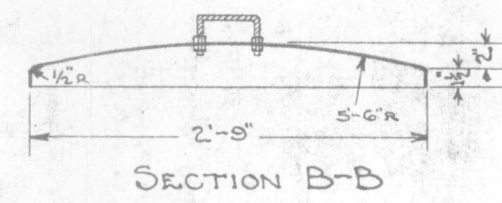


FIG. C-TRUNKING STRAP  
 {WITH ONE 1/2 X 5" BOLT, NUT AND LOCK WASHER}



TOP VIEW  
 LID AND FROST COVER REMOVED



SECTION B-B

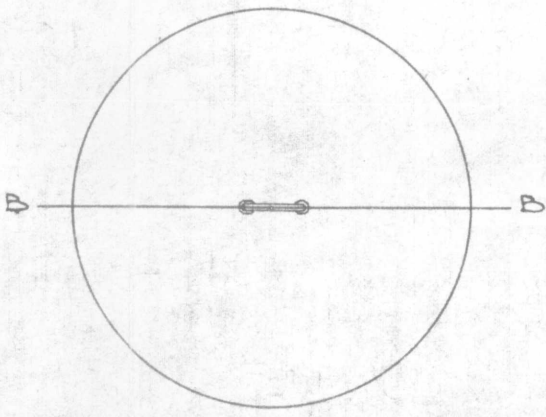


FIG. D  
 \*10 GALV. PRESSED STEEL COVER

**BILL OF MATERIAL**

- 1 SET SHELVING AS PER PLAN 167-89E.
- 1 FROST COVER " " " 167-89E.
- 1 HANDLE, FIG. A.
- 1 COVER, FIG. D. WITH HANDLE, FIG. B.
- 1 TRUNKING STRAP, FIG. C.
- 1 GALV. IRON CHAIN, 3'-10" LONG.
- 1 LADDER AS PER PLAN 167-89E.

**CONCRETE SPECIFICATIONS**

CONCRETE TO BE 1-1 3/4-3 WITH 7 LBS HYDRATED LIME PER SACK OF CEMENT.  
 REINFORCE ALL WALLS WITH C-C-10-10 MESH OR EQUAL.  
 REINFORCE BOTTOM WITH 1/4" Ø RODS @ CENTERS BOTH WAYS.  
 REINFORCE TOP WITH 3/8" Ø RODS PLACED NEAR NECK.  
 PLACE 10-1/4" Ø VERTICAL RODS IN WALLS BENT THROUGH TOP INTO NECK.

DRAWN BY: *ML*  
 CHECKED BY: *CAC*  
 APPROVED BY: *Car*  
 SUPT. SIGNALS  
 SEPT 1924  
 167-89D