

FIG. A. 5 1/2" STAY CLAMP (HALF)
(OPEN HEARTH STEEL)

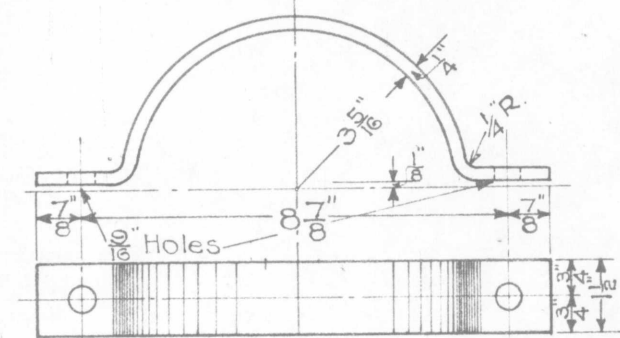


FIG. B. 6" STAY CLAMP (HALF)
(OPEN HEARTH STEEL)

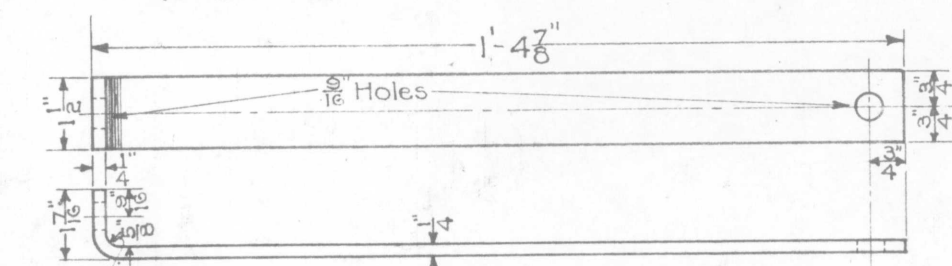


FIG. C. STAY SIDE
(OPEN HEARTH STEEL)

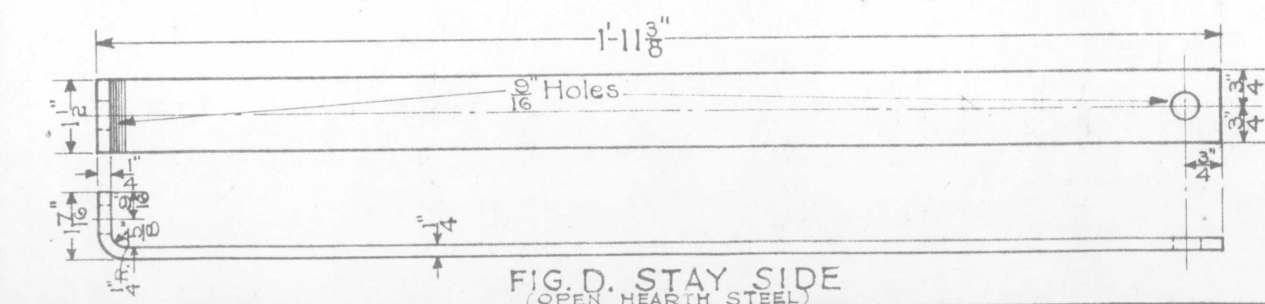


FIG. D. STAY SIDE
(OPEN HEARTH STEEL)

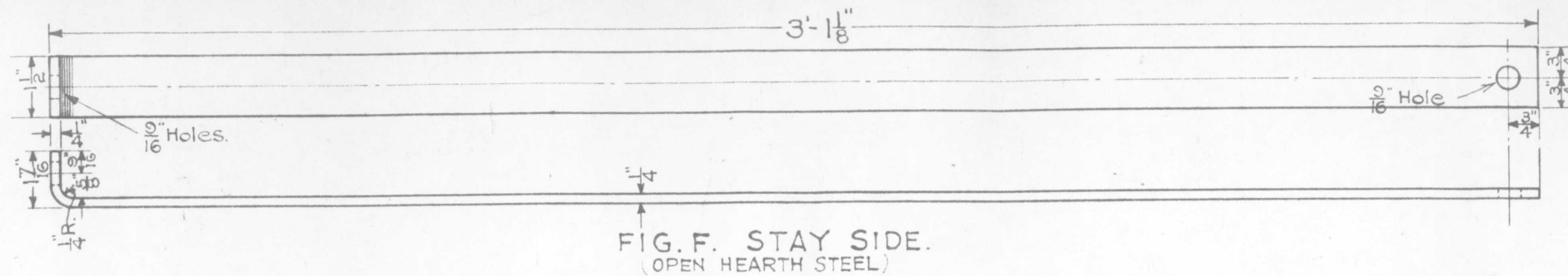


FIG. F. STAY SIDE
(OPEN HEARTH STEEL)

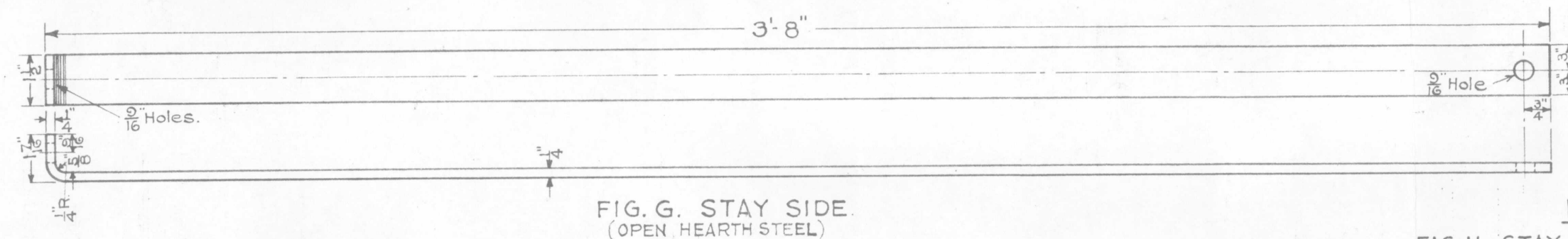


FIG. G. STAY SIDE
(OPEN HEARTH STEEL)

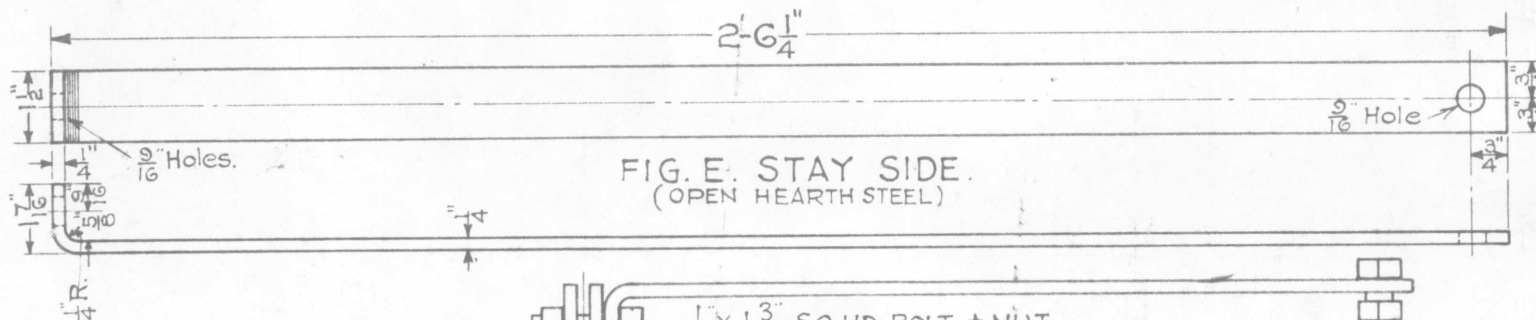
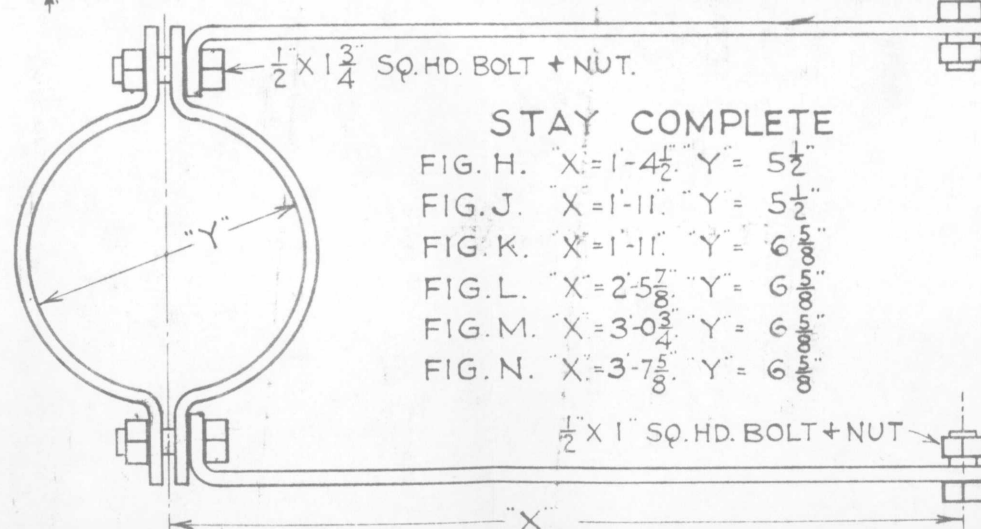


FIG. E. STAY SIDE
(OPEN HEARTH STEEL)



STAY COMPLETE

- FIG. H. X=1-4 1/2" Y= 5 1/2"
- FIG. J. X=1-11" Y= 5 1/2"
- FIG. K. X=1-11" Y= 6"
- FIG. L. X=2-5 7/8" Y= 6"
- FIG. M. X=3-0 1/4" Y= 6"
- FIG. N. X=3-7 5/8" Y= 6"

1/2" X 1" SQ. HD. BOLT + NUT

G. N. RY.

PLAN OF STANDARD

LADDER CLAMPS & STAYS FOR
MECHANICAL GROUND AND
BRIDGE OR BRACKET SIGNALS

OFFICE OF SIGNAL ENGINEER ST. PAUL, MINN.
SCALE 3" = 1'-0"

DEC. 1919

NOTE.

- FIG. A. = R.S.A. 10291. FIG. H. = R.S.A. 102911.
- FIG. B. = R.S.A. 10292. FIG. J. = R.S.A. 102912.
- FIG. C. = R.S.A. 10296. FIG. K. = R.S.A. 102913.
- FIG. D. = R.S.A. 10297. FIG. L. = R.S.A. 102914.
- FIG. E. = R.S.A. 10298. FIG. M. = R.S.A. 102915.
- FIG. F. = R.S.A. 10299. FIG. N. = R.S.A. 102916.
- FIG. G. = R.S.A. 102910.

BILL OF MATERIAL

- FIG. H. STAY COMPLETE.
- 2 - 5 1/2" HALF STAY CLAMPS - FIG. A.
 - 2 - STAY SIDES - FIG. C.
 - 2 - 1/2" X 1 3/4" SQ. HD. BOLTS + NUTS.
 - 2 - 1/2" X 1" SQ. HD. BOLTS + NUTS.

- FIG. J. STAY COMPLETE.
- 2 - 5 1/2" HALF STAY CLAMPS - FIG. A.
 - 2 - STAY SIDES - FIG. D.
 - 2 - 1/2" X 1 3/4" SQ. HD. BOLT + NUT.
 - 2 - 1/2" X 1" SQ. HD. BOLT + NUT.

- FIG. K. STAY COMPLETE.
- 2 - 6 5/8" HALF STAY CLAMPS - FIG. B.
 - 2 - STAY SIDES - FIG. D.
 - 2 - 1/2" X 1 3/4" SQ. HD. BOLTS + NUTS.
 - 2 - 1/2" X 1" SQ. HD. BOLTS + NUTS.

- FIG. L. STAY COMPLETE.
- 2 - 6 5/8" HALF STAY CLAMPS - FIG. B.
 - 2 - STAY SIDES - FIG. E.
 - 2 - 1/2" X 1 3/4" SQ. HD. BOLTS + NUTS.
 - 2 - 1/2" X 1" SQ. HD. BOLTS + NUTS.

- FIG. M. STAY COMPLETE.
- 2 - 6 5/8" HALF STAY CLAMPS - FIG. B.
 - 2 - STAY SIDES - FIG. F.
 - 2 - 1/2" X 1 3/4" SQ. HD. BOLTS + NUTS.
 - 2 - 1/2" X 1" SQ. HD. BOLTS + NUTS.

- FIG. N. STAY COMPLETE.
- 2 - 6 5/8" HALF STAY CLAMPS - FIG. B.
 - 2 - STAY SIDES - FIG. G.
 - 2 - 1/2" X 1 3/4" SQ. HD. BOLTS + NUTS.
 - 2 - 1/2" X 1" SQ. HD. BOLTS + NUTS.

Drawn by R.A.
Checked by J.B.
Approved by C.A.
Signal Engr.

1-7-20.

167-96