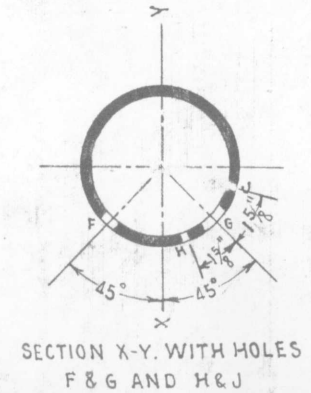
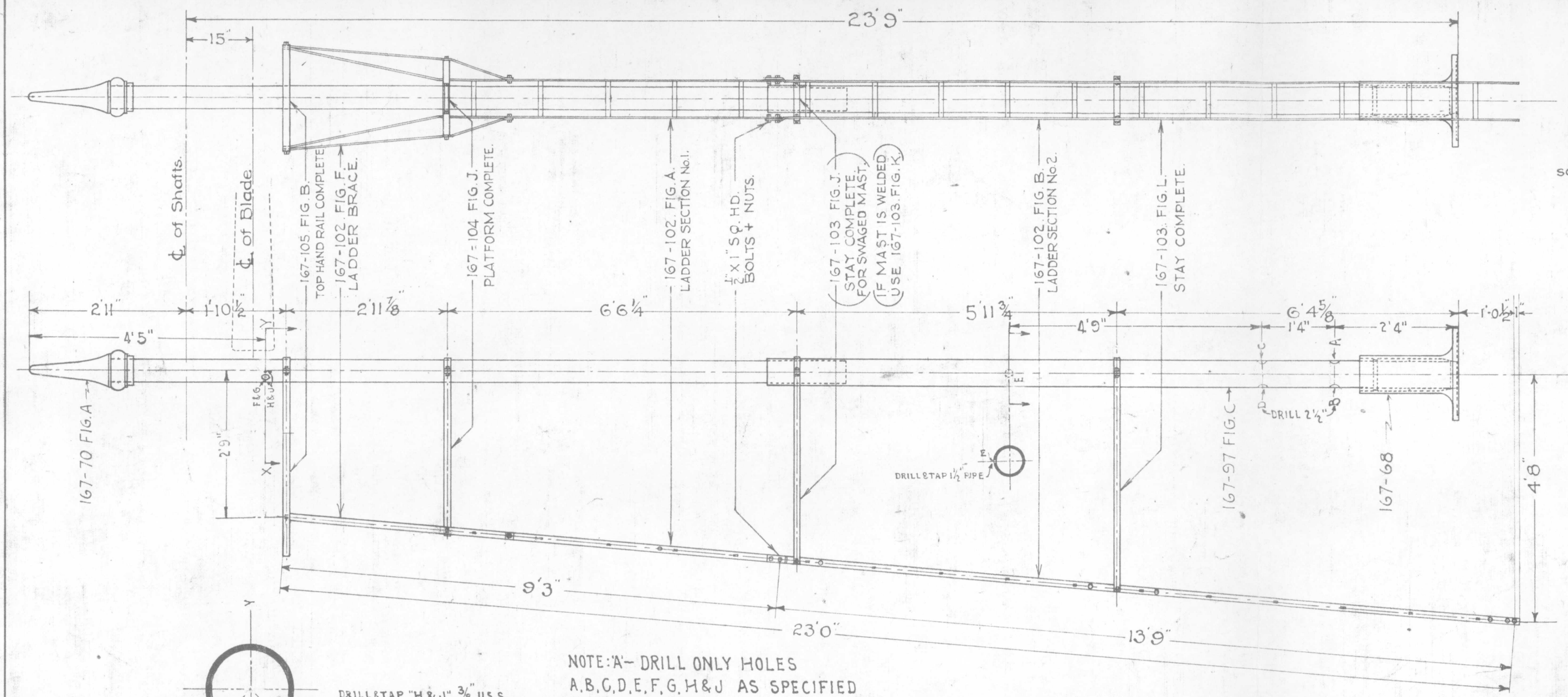


AC

LADDER FOR ONE-ARM
ELECTRICAL GROUND SIGNAL
OFFICE OF SIGNAL ENGINEER ST. PAUL, MINN.
SCALE $\frac{1}{2}'' = 1'-0''$ DEC. 1919.



DRILL & TAP "H & J" $\frac{3}{8}$ " U.S.S.
DRILL "G" 2"
DRILL & TAP "F" $\frac{1}{2}$ " PIPE.

NOTE: 'A' - DRILL ONLY HOLES
A, B, C, D, E, F, G, H & J AS SPECIFIED
BY REQUISITION.

BILL OF MATERIAL FOR LADDER COMPLETE.

- 1 - LADDER SECTION No. 1. - 167-102-FIG. A.
- 1 - " " " " 2. " " " " B.
- 1 - TOP HAND RAIL - 167-105-FIG. A.
- 2 - LADDER BRACES - 167-102-FIG. F.
- 1 - TOP PLATFORM No. 1. - 167-104 FIG. A.
- 2 - STAY SIDES - 167-103-FIG. E.
- 2 - " " " " " F.
- 4 - 5" STAY CLAMPS (HALF) - 167-103-FIG. A.
- 2 - 6" " " " " " C.
- 2 - 6" " " " " " " B.
- 14 - 1" X 1" SQ. HD. BOLTS + NUTS.
- 2 - 1" X 1 1/2" " " " " " "
- 8 - 2" X 1 1/4" " " " " " "

NOTE. LADDER COMPLETE 167-98 = R.S.A. 13651.
NOTE. THE BILL OF MATERIAL AS LISTED ABOVE IS FOR A SWAGED MAST. WHEN MAST IS WELDED AS PER 167-97. FIG. C, FURNISH LADDER COMPLETE AS PER ABOVE BILL WITH FOLLOWING EXCEPTIONS.
① 4 - 6" STAY CLAMPS (HALF) 167-103.FIG. A. INSTEAD OF 2.
② NO - 6" STAY CLAMPS (HALF) 167-103.FIG. C. REQUIRED. UNLESS WELDED MAST IS SPECIFIED FURNISH AS PER ABOVE BILL OF MATERIAL.

Drawn by R.A.
Checked by J.R.
Approved by G.S.
Signal Engr.

REVISED 1-15-23
SEE NOTE "A" 167-98