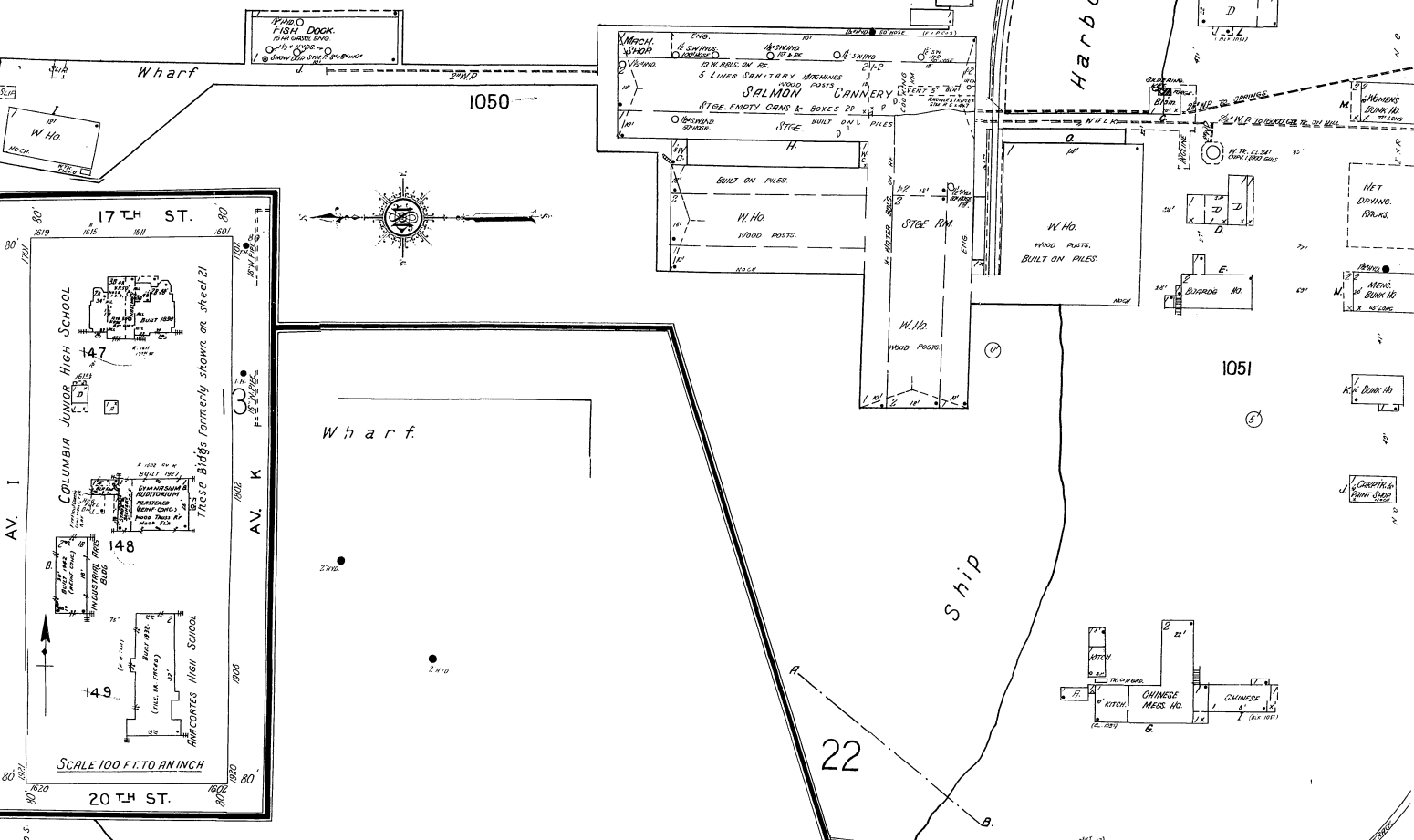


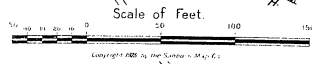
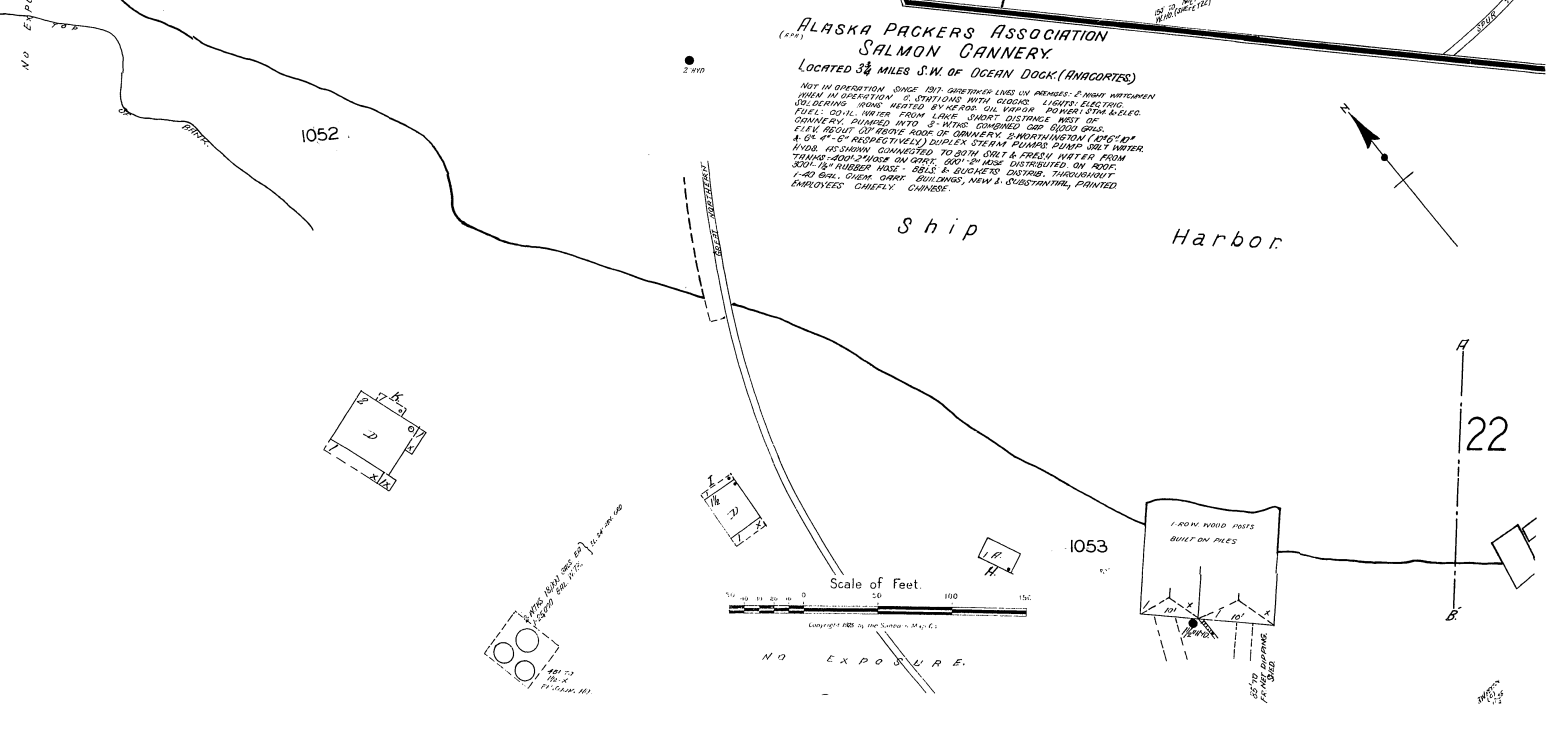
FIDALGO ISLAND PACKING CO'S SALMON CANNERY

LOCATED 3 1/2 MILES S.W. OF OCEAN DOCK (ANACORTES)
 NOT IN OPERATION FROM APRIL TO NOV
 NIGHT MATCHMEN WHEN IN OPERATION - NO SLEEP MEN IN CHARGE OF
 PREMISES DURING NIGHT IN WAREHOUSE - ELECTRICITY - FUEL - OIL - WATER
 25% PAID FROM SHIPPING ABOUT 500' S. OF CANNERY. ALSO FROM 1800
 600' S. OF ROOF IS 6-1/2 FEET 2" ABOVE TOP OF CANNERY. FUEL FROM WARE
 BY A SMALL FURNACE WHICH PUMP OIL TO 1000 GAL. W. T. AS SHOWN.
 2500' S. OF OCK. DURING WINTER SPRING WATER FROM BANK TO SHIPYARD
 1/2 MILES S. SHOWN USED 18" DIA. WATER PIPES DISCONNECTED IN WINTER SEASON
 PIPES LEADING TO BANK ON W. SIDE BRICK SUBSTANTIAL. ROUGH BURNED
 & WINTERED - OUTSIDE.



ALASKA PACKERS ASSOCIATION SALMON CANNERY

LOCATED 3 1/2 MILES S.W. OF OCEAN DOCK (ANACORTES)
 NOT IN OPERATION SINCE 1917. OVERHEAD LINES IN PREMISES - 2 HOUR MATCHMEN
 WHEN IN OPERATION - 2 STATIONS WITH CLOCKS - LIGHTS - ELECTRIC
 WIREWORK - WINGS - WETTED BY WATER OIL WATER - FURNACE - STEAM & ELEC
 FUEL - OIL - WATER FROM LOWE - SHORT DISTANCE WEST OF
 CANNERY. PUMPS INTO 2" WATER CONDUIT - COMBINED ONE 1000 GAL.
 FLY ABOUT 50' ABOVE ROOF OF CANNERY. 2" WATER CONDUIT (18" BY 12")
 4-1/2" (2" RESPECTIVELY) COMPLEX STEAM PUMPS PUMP OUT WATER
 FROM 40' SHOWN CONNECTED TO BOTH OIL & CREAM WATER FROM
 TANK - 500' W. FROM OCK. 200' S. W. AS SHOWN DISTRIBUTED ON ROOF.
 3/4" DIA. RUBBER HOSE - 200' S. & 200' W. DISTANCE THROUGHOUT
 1-1/2" DIA. CHINA OIL - BUILDINGS - NEW & SUBSTANTIAL. FINISHED
 EMPLOYED - CHIEFLY - CHINESE.



NO EXPOSURE.