

100-

2

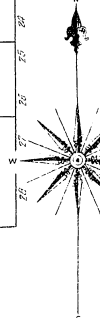
L A N D

101

RAILROAD (80 FEET WIDE)

Aug. 1909
REARDAN
WASH.

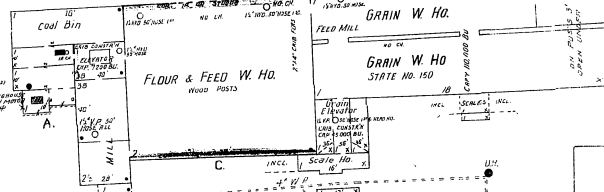
3



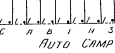
R. R. RIGHT OF WAY

STANDARD OIL CO'S
SUBSTATION

102



WASHINGTON GRAIN & MILLING CO.
10000 MILL, NO. 11 (OPERATION SINCE 1924)
CAP. 200,000 LBS. PER DAY
ENTER ONY PAN: ELEC. LIGHTS, ELEC. HOSE AS SHOWN
WATER TANK: 100 GALS. CAPACITY
WATER MAIN: 4" DIA. EXTENDS BOLS OF WATER & BUCKETS EACH
FLOOR: 10' HIGH
MACHINERY: 11 STINDS OF PULLS, ONE 3000 LB. ONE 4000 LB. EACH
2" : 3 DUST COLLECTORS, ONE RESERVOIR, ONE SEPARATOR
TWO BARN CUSTERS, TWO PENS, TWO PENS
3" : 4 DUST COLLECTORS, 3 FEEDS, 4 SIFTERS.

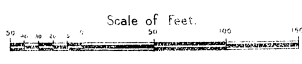


BROADWAY

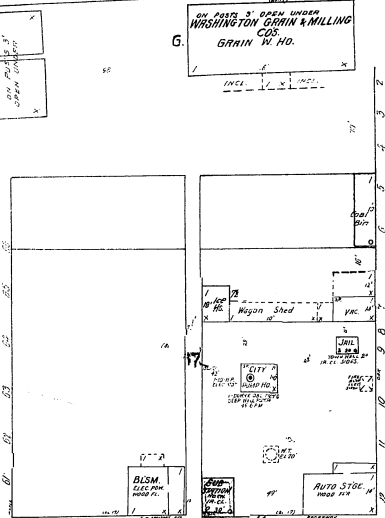
MAPLE

OAK

103



CULTIVATED
LAND



SPOKANE

5

3