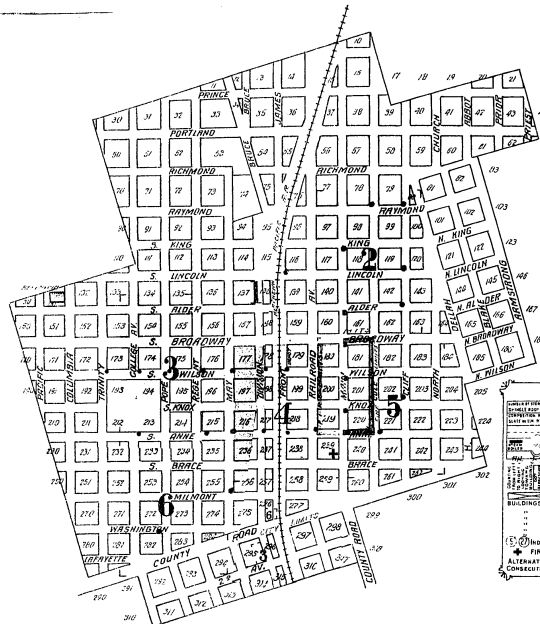


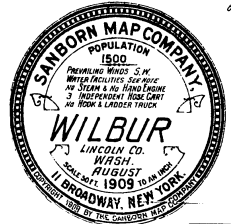
# INDEX.

## SPECIALS.

Baptist Church	B	1
Columbia River Milling Co. Grain Warehouse	C	4
Commercial Hotel	C	4
Farmer's Grain & Supply Co.'s Grain W. Ho.	F	4
Grain Growers W. Ho. Co.'s Grain W. Ho.	G	3
Hay's, M. E., Warehouse	H	1
Hyden Lumber Co.'s Yard	H	2
Jones Milling Co.	J	4
M. E. Church	M	2
Muir's, Jas. A., Grain Warehouses	M	2
N. P. R. R. Passenger & Freight Depot	N	4
Presbyterian Church	P	3
Puget Sound W. Ho. Co. Grain W. Ho.	P	1
Roman Catholic Church	R	3
South M. E. Church	S	2
Town Hall	T	4
Washington Grain & Milling Co.'s Grain Warehouses	W	4
Wilbur, The, Electrical Co.	W	4
Public School	W	4
Steam Laundry	W	3
Woodbury's, E. R., Lumber Yard	W	5



WASH. 714



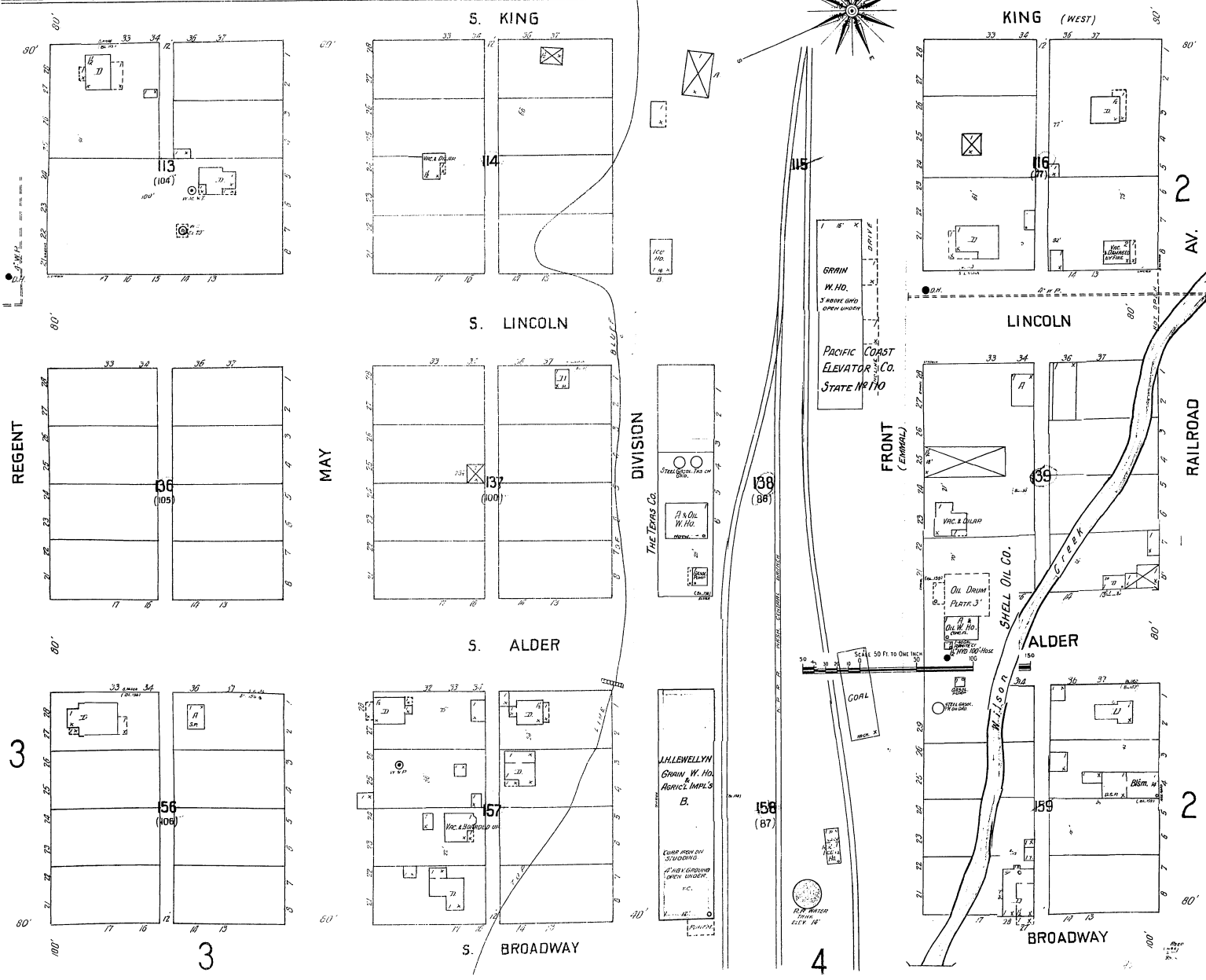
6 SHEETS  
I  
37

**KEY**

- UNIMPROVED LOTS
- IMPROVED LOTS
- STABLES
- WATER TOWER
- WATER PUMP
- WATER RESERVOIR
- WATER MAIN
- WATER VALVE
- WATER PIPE
- WATER CISTERN
- WATER TANK
- WATER PUMP HOUSE
- WATER RESERVOIR
- WATER MAIN
- WATER VALVE
- WATER PIPE
- WATER CISTERN
- WATER TANK
- WATER PUMP HOUSE

**WATER FACILITIES:** Source of supply: Water is pumped from mechanical springs, located 3 miles N.W. of P.O., by an over-head pipe to the town, 200 ft. per min. (in reserve) 100 200 and 300 gallon reservoir (see map) elev. 130 above Main St. About 2 miles 4 1/2 steel mains through town, 14 1/2 in. 6 in. with subsequent connections. 3 1/2 double hydrants. Brass to business section. 50 lbs. FIRE DEPT: Volunteer, 4 men's 2 members, drill occasionally 3-2 wheel hose cart, 1200' of 2 1/2 cotton hose. Fire hydrants shown by heavy red line on Key Map. Fire station: Elec. driven, operated steam, 100 gal. 100'. Grades: level in business location.

REV 7-30 714 9.22-15



GRAIN W. HO.  
3 HOSE AND OPEN UNDER

PACIFIC COAST ELEVATOR CO.  
STATE NO. 170

THE TEXAS CO.  
STEAM ENGINE 750 HP

OIL W. HO.  
MOTOR

J. H. LEWELLYN  
GRAIN W. HO.  
AGRIC. IMPLS.  
B.

ELECT. MACH. CO.  
STEAM ENGINE

AGRIC. IMPLS.  
MOTOR

OIL OIL CO.  
PLATE 3

OIL W. HO.  
MOTOR

STEAM ENGINE 100 HP

SCALE 50 FT. TO ONE INCH

R.R. WATER TOWER  
ELEV. 14'