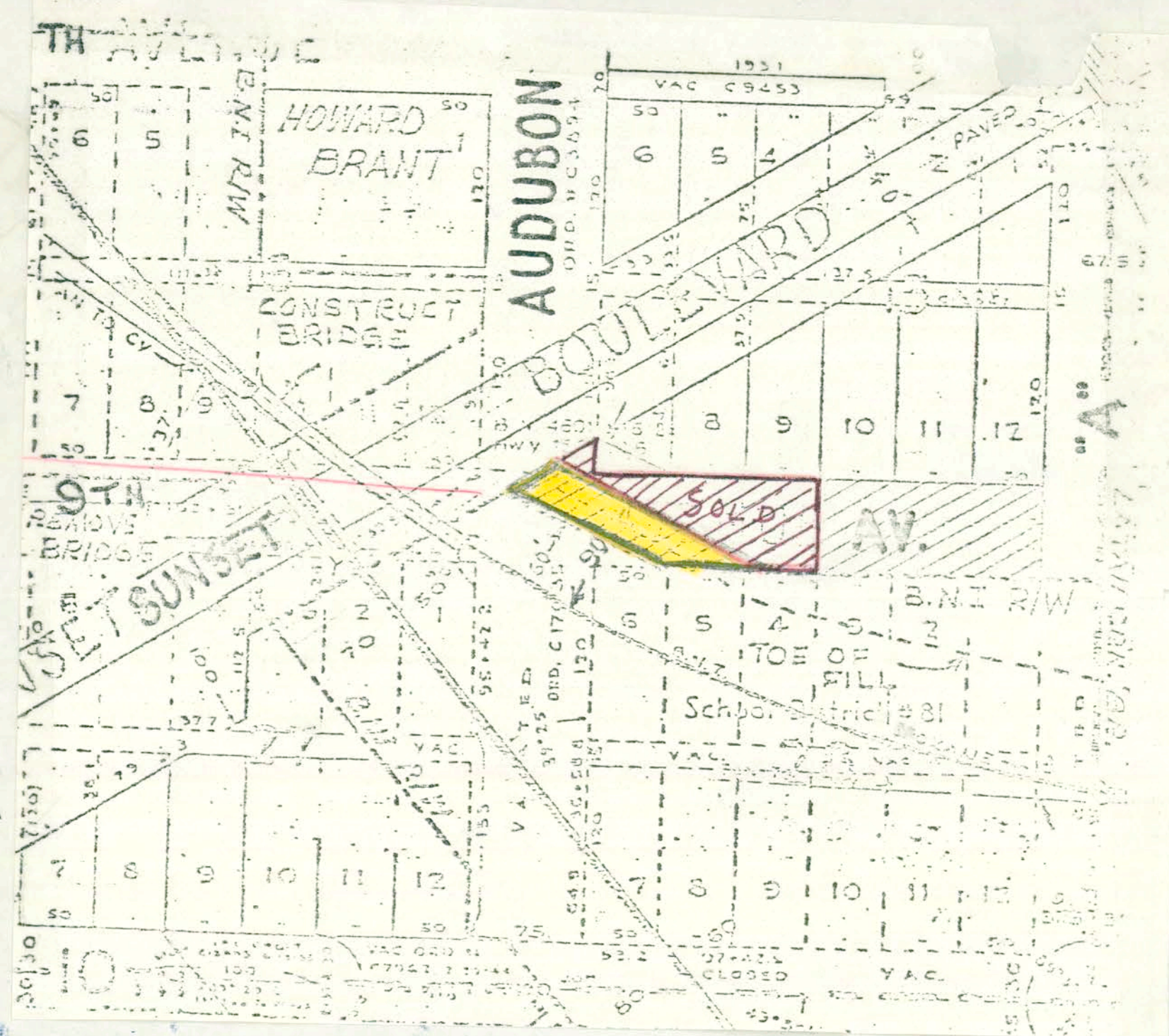
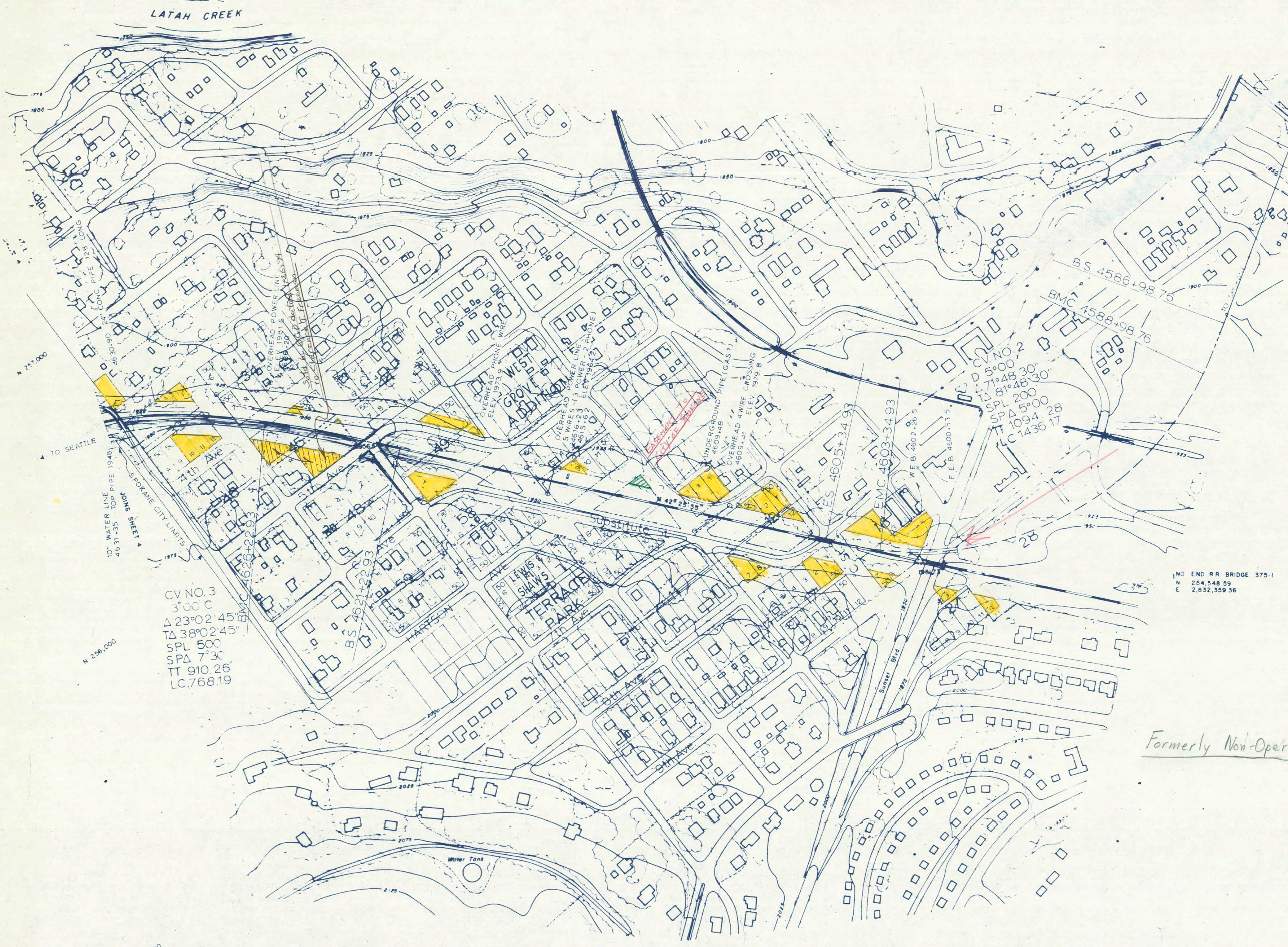


TS-1 WSHD
N 255,682.45
E 2,834,958.19



RIGHT-OF-WAY LEGEND

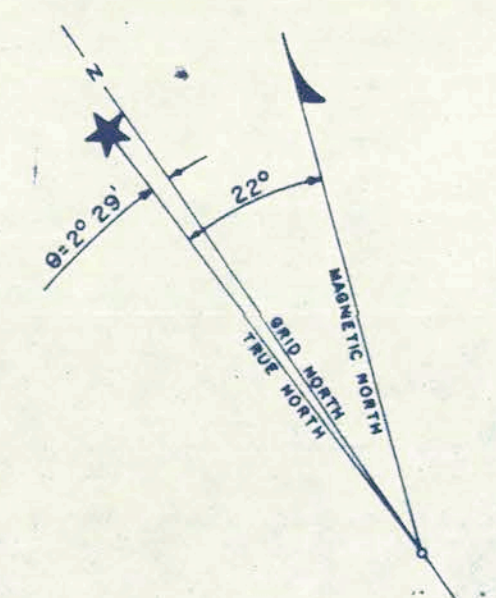
- Purchase - Green**
1. Lots 8 & 9 Block 33 Shaw's Add'n
 2. Lots 7 & 8 Block 45 Shaw's Add'n
 3. Portion Lot 1, Block 46, Shaw's Add'n (May be necessary to purchase all of Lots 1 & 2)
 4. Lots 1 thru 4 Inc. Block 48 Shaw's Add'n
 5. Lots 5 & 6 Block 58 Shaw's Add'n
 6. Portion Lots 10, 11 & 12, Block 58 Shaw's Add'n
 7. Portion Lots 5, 6, 9 & 10 Block 4, Lewis Terrace Park Add'n
- Vacate - Red**
1. Alley Block 33 Shaw's Add'n
 2. Alley Block 45 Shaw's Add'n
 3. Alley Block 46 Shaw's Add'n
 4. Alley Block 57 Shaw's Add'n
 5. 4th Ave. between line 50' S.W. parallel to B.N. C/L to line 60' N.E. parallel to former SP&S C/L
 6. "G" St. between line 50' S.W. parallel to B.N. C/L to North line of alley in Blk 33 Shaw Add'n ext'd.
 7. 5th Ave. between W. line Lot 4, Blk 48 Shaw's Add'n to N.E. line of street thru Blk 49 Shaw's Add'n
 8. Street thru Blk 49 Shaw's Add'n from 5th to 6th Avenues
 9. 6th Ave. between line 50' S.W. parallel to B.N. C/L to line 70' N.E. parallel to former SP&S C/L
 10. "H" St. between line 50' S.W. parallel to B.N. C/L to line 50' N.E. parallel to former SP&S C/L
 11. "H" St. between line 50' S.W. parallel to B.N. C/L to line 70' N.E. parallel to former SP&S C/L
 12. Harrison between line 50' S.W. parallel to B.N. C/L to line 50' N.E. parallel to former SP&S C/L
 13. Substitute St. - All that lying N.E. of a line 50' S.W. parallel to B.N. C/L from S. line at 6th to N. line of 7th.
 14. "H" St. between N. line 7th to line 50' N.E. parallel to former SP&S C/L
 15. 8th Ave. between line 70' S.W. parallel to former SP&S C/L and line 50' N.E. parallel to former SP&S C/L
 16. Alley Block 4 Lewis Terrace Park Add'n
 17. Alley Block 12 Lewis Terrace Park Add'n

CV NO. 3
3'00 C
Δ 23°02'45"
TA 38°02'45"
SPL 500
SPA 7'30
TT 910.26
LC.768.19

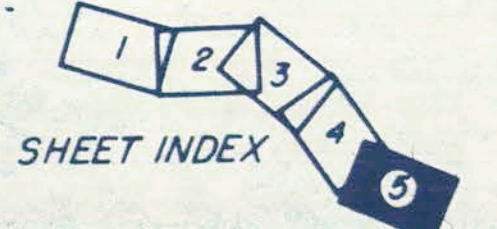
NO END RR BRIDGE 375-1
N 254,548.59
E 2,832,359.36

Formerly Non-Operating Property requested reclassified as operating

1-1-72



G2-R1



NOTE
Contour accuracy doubtful in heavily wooded areas.
DATUM
VERTICAL : CITY OF SPOKANE (1944)
HORIZONTAL : WASHINGTON COORDINATE SYSTEM, NORTH ZONE

AERIAL TOPOGRAPHIC MAP
PROPOSED CHANGE OF LINE BETWEEN
SPOKANE & LYONS, WASHINGTON
SCALE 1" = 200' CONTOUR INTERVAL 5'

MAPPED FOR
GREAT NORTHERN RAILWAY CO.
BY
WALKER & WHITEFORD, INC.
AUG. 17, 1970 JOB NO. 62-929

SHEET 5 OF 5