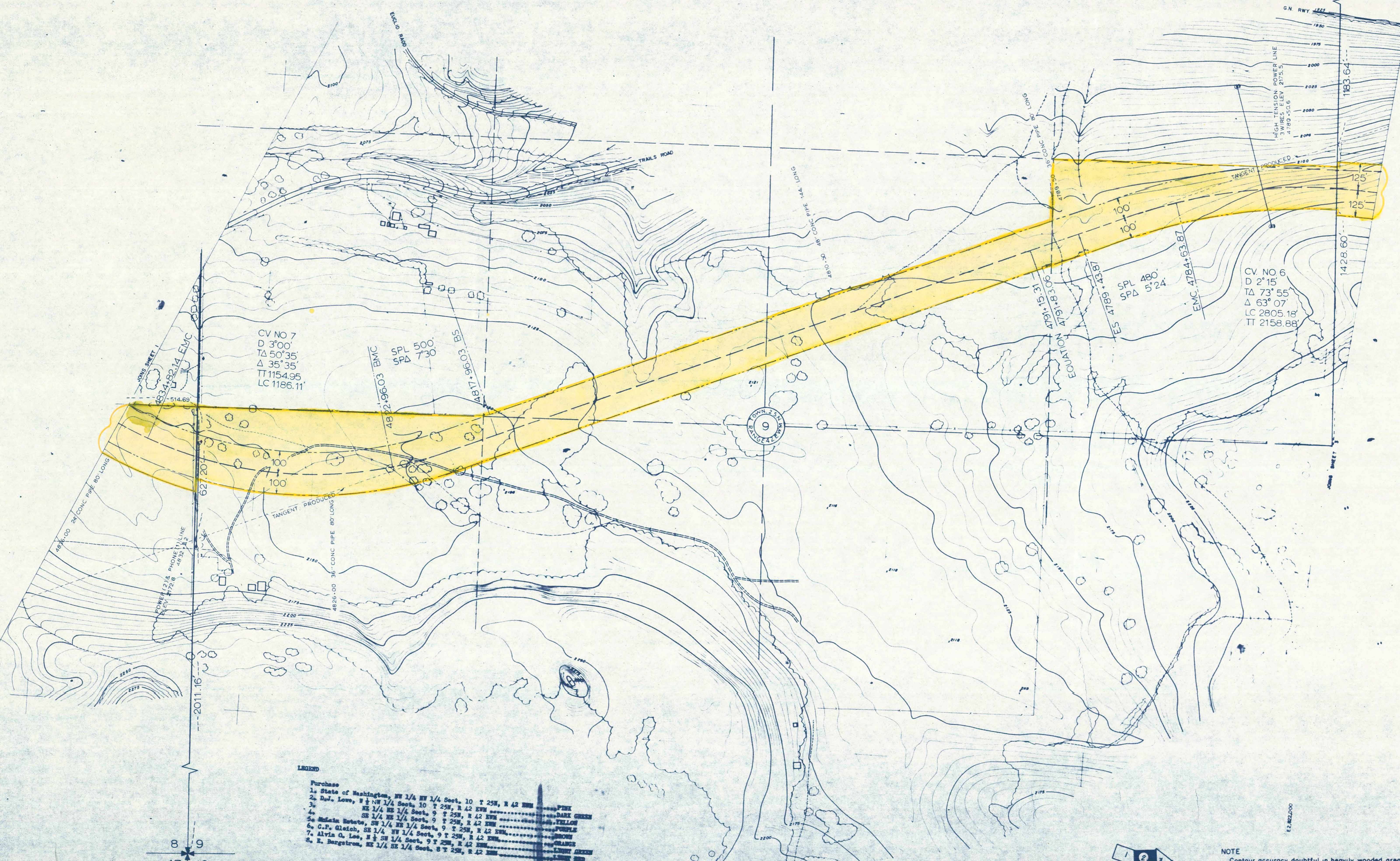


N 267,000
N 266,000
N 265,000
N 264,000

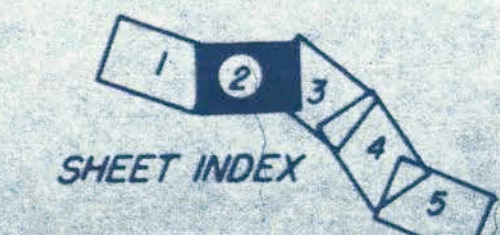


8 9
17 16

4 3
9 10

- LEGEND**
- Purchase**
1. State of Washington, NW 1/4 NW 1/4 Sect. 10 T 25N, R 42 E
 2. D.J. Love, N 1/4 NW 1/4 Sect. 10 T 25N, R 42 E
 3. NE 1/4 NE 1/4 Sect. 9 T 25N, R 42 E
 4. SE 1/4 NE 1/4 Sect. 9 T 25N, R 42 E
 5. M. K. Ketcher, SW 1/4 NW 1/4 Sect. 9 T 25N, R 42 E
 6. C.F. Glain, SE 1/4 NW 1/4 Sect. 9 T 25N, R 42 E
 7. Alvin O. Lee, N 1/4 SW 1/4 Sect. 9 T 25N, R 42 E
 8. E. Bergstrom, NE 1/4 NE 1/4 Sect. 8 T 25N, R 42 E

NOTE
Contour accuracy doubtful in heavily wooded areas.
DATUM
VERTICAL CITY OF SPOKANE
HORIZONTAL WASHINGTON COORDINATE SYSTEM, NORTH ZONE



G2-R4

AERIAL TOPOGRAPHIC MAP
PROPOSED CHANGE OF LINE BETWEEN
SPOKANE & LYONS, WASHINGTON
SCALE 1" = 200' CONTOUR INTERVAL 5'
MAPPED FOR
GREAT NORTHERN RAILWAY CO.
BY
WALKER & WHITEFORD, INC.
AUG. 17, 1970 JOB NO 62-929
SHEET 2 OF 5