

No 262 Add
 No 261
 No 260
 No 259
 No 258
 No 257
 No 256
 No 255
 No 254
 No 253

LONG STA. 3471 TO 3472 = 125 FT
 V.S.

LONG STA. 3431 TO 3436 = 125 FT
 V.S.

11/12
 14/13

21/20
 22/20
 23/20

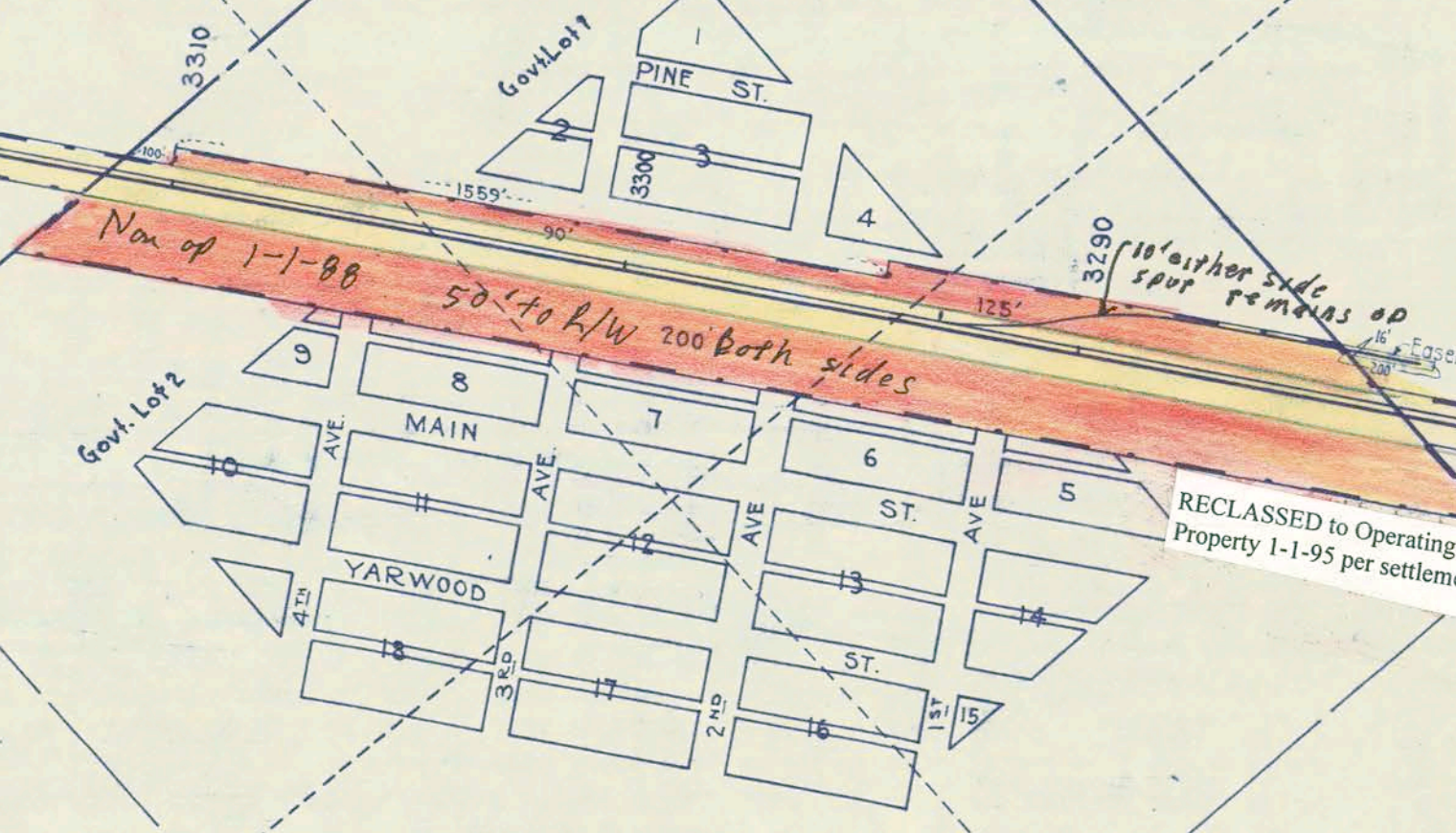
23/20
 24/20
 25/20

13/18
 24/19

13/17
 14/18

TOWNSHIP 22 NORTH RANGE 35 EAST WM.
 TOWNSHIP 22 NORTH RANGE 36 EAST WM.

MOHLER



62-15

V-2
15

Lincoln County