

31 32
6 5

32 33
5 4

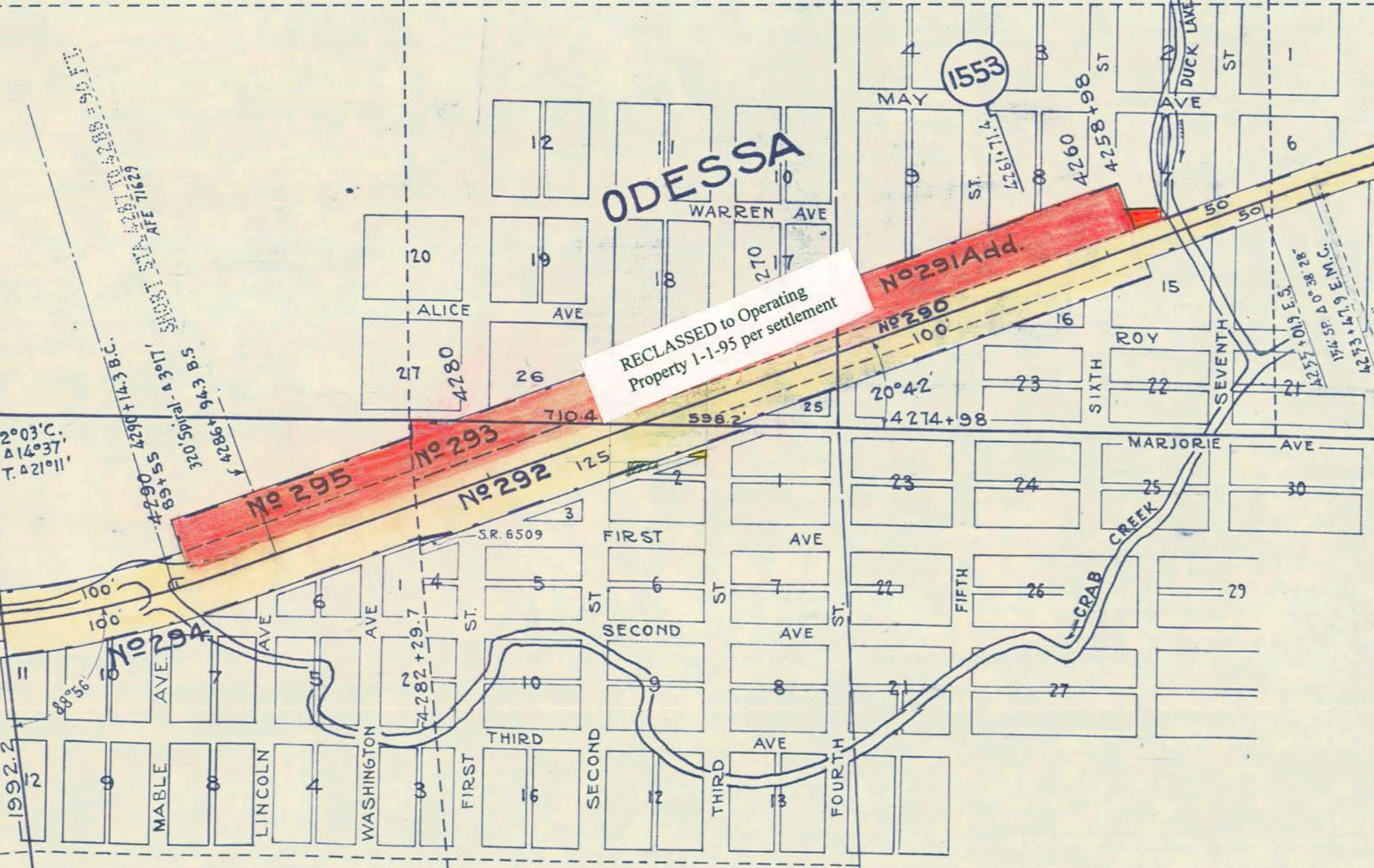
1" = 400'

Sec 6

1554

LONG STA. 4300 TO 4301 = 442 FT.
V.S.
1800 ± 75 E.E. 4300
300 Spinal 4317
4331 ± 21.6 E.C.
4335 ± 35

NO 296



ODESSA

RECLASSIFIED to Operating
Property 1-1-95 per settlement

NO 295 NO 292

5 4
8 9

Line Change - Me 71629 - 1946

EQUATION

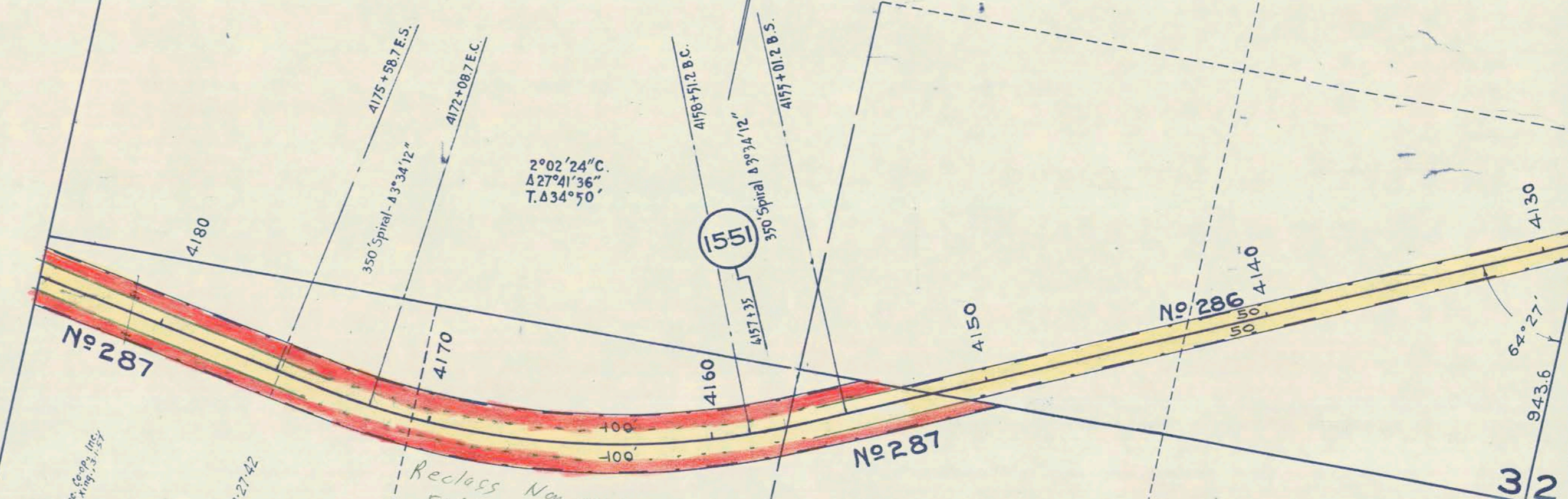
RECLASSIFIED to Operating
Property 1-1-95 per settlement

Acquired by W.D. Hill, 10, 1940
From E.H. Strapp and wife
(See Ord. 1, 1940 at 2-22-40)



10

3



RECLASSIFIED to Operating
Property 1-1-95 per settlement

10

62-19

19

Lincoln County