

See V-3/14

21
11
12

RECLASSIFIED to Operating
Property 1-1-95 per settlement

GRAVEL SPUR

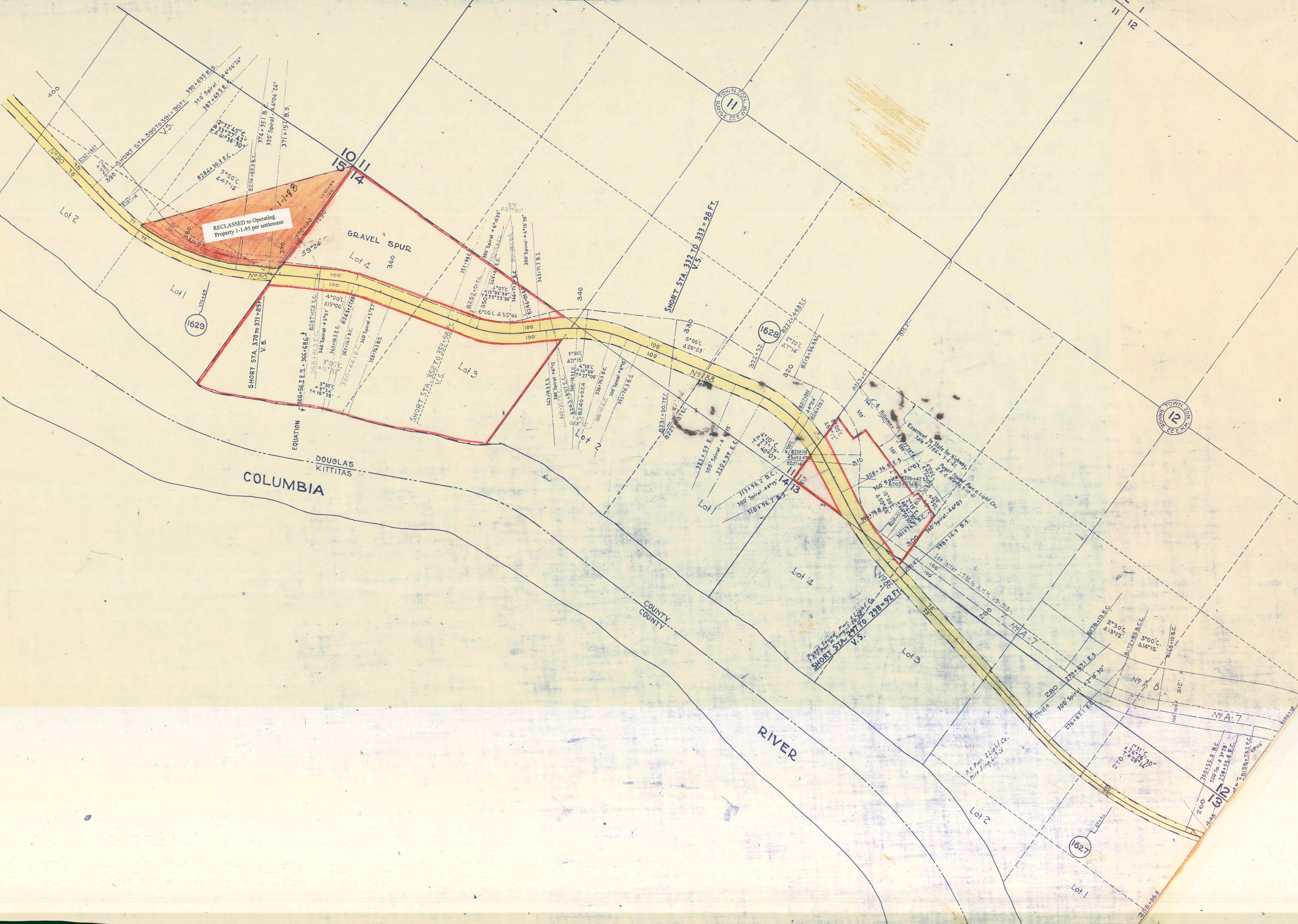
COLUMBIA
DOUGLAS
KITKITAS

RIVER

COUNTY
COUNTY

DOUGLAS COUNTY

TOWNSHIP 20 NORTH RANGE 22 EAST W.M.



G3-13A

V-3
13

Douglas County

Map Case - Townwork Design