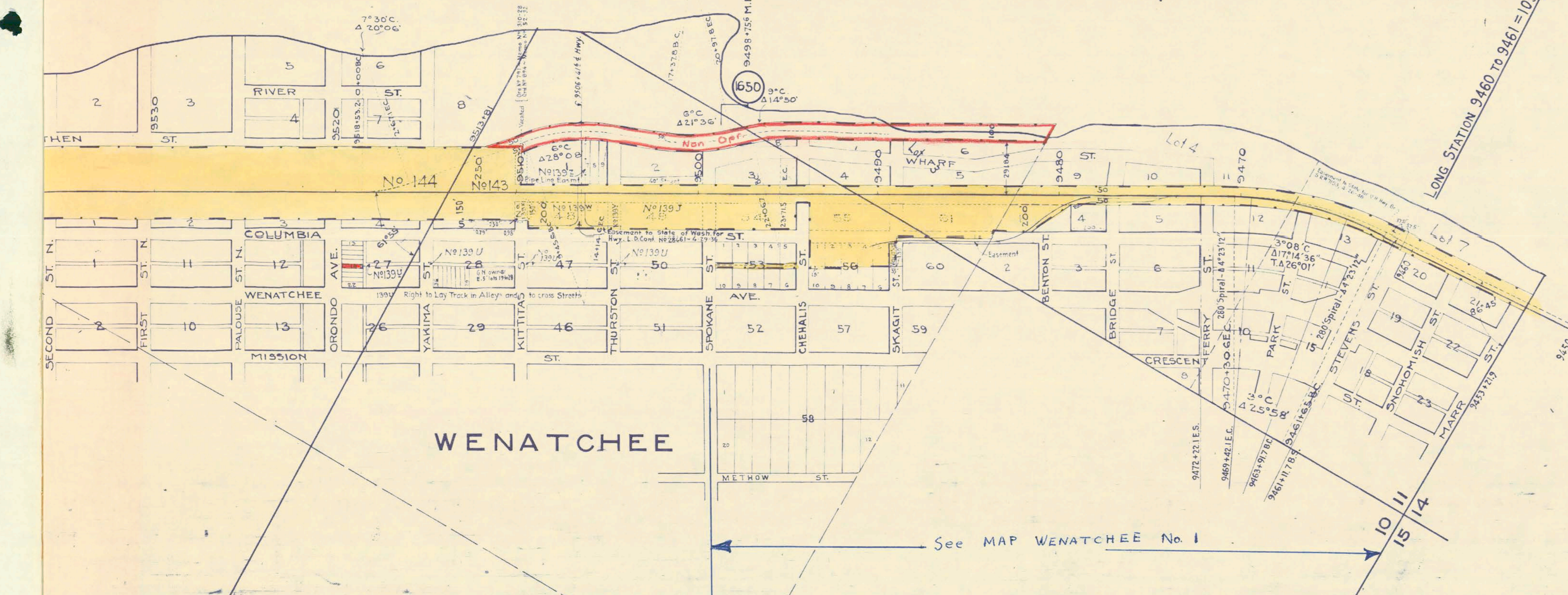


R I V E R



WENATCHEE

See MAP WENATCHEE No 1

LONG STATION 9460 TO 9461 = 103.4'

10 11
15 14

Lot 2

Lot 3

Lot 6

15 14
22 23

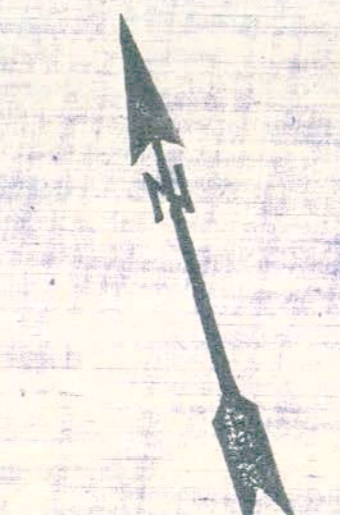
See MAP APPELYARD (V-3/SL-19)

L. D. Cont. No. 25433 Apr. 15, 1931
 G. N. Ry. grants Wash. Elec. Co. right to inundate
 Ry. right of way and to raise the waters of the Wenat-
 chee and Columbia Rivers from Rock Island Dam to
 Zena, not to exceed 60 feet above sea level at dam
 site. Elec. Co. to provide new roadbed, Sta. 8852.10
 8903 Ry. Co. to move tracks and facilities to new
 roadbed at expense of Elec. Co. Wash. Elec. Co. transfers
 all rights to R.S.P. & L. Co. June 1931. (See Chief Engr. Cont. File W-1000-31.)



9 10
16 15

23



24

63-19

V-3
19

Cheban County