

COLUMBIA ICE & COLD STORAGE CO.
L.D. Cont. No. 18155-1 Apr. 30, 1924.
Ry. to own and maintain.

WENATCHEE VINEGAR CO.
L.D. Cont. No. 18455-1 Mar. 17, 1928.
Ry. to maintain all exp. of Ind. Ind. town.

WENATCHEE VINEGAR CO.
L.D. Cont. No. 18455-2 June 5, 1928.
Ry. to maintain all exp. of Ind. Ind. town.

L. D. Cont. No. 25433 Apr. 15, 1931
G. N. Ry. grants West. Elec. Co. right to inundate
Ry. right of way and to raise the waters of the Wenat-
chee and Columbia Rivers from Rock Island Dam to
Zena, not to exceed 60 feet above sea level at dam
site. Elec. Co. to provide new roadbed, Sta. 8852 to
8963. Ry. Co. to move tracks and facilities to new
roadbed at expense of Elec. Co. West. Elec. Co. transfers
all rights to R.I.P. & L. Co. June 1931. (See Chief Eng. Form File W-1000-31.)

CANNERY SPUR
L.D. Cont. No. 1073 Oct. 12, 1905
Covers only spur off Deck Track for Standard Oil Co. All R.M. 1825.
Ry. to own and maintain.

235' EXTENSION FOR WENATCHEE REY-SPRAY CO.
L.D. Cont. No. 7637 June 8, 1909.
Ry. to own and maintain.

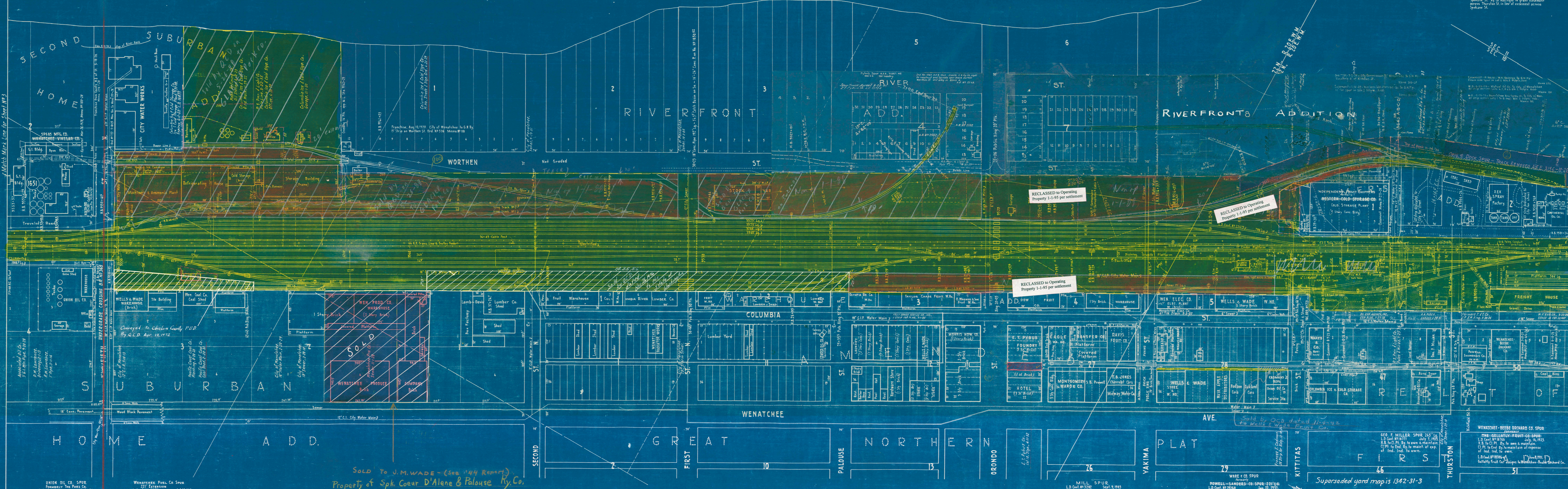
112' EXTENSION FOR CONTINENTAL OIL CO.
L.D. Cont. No. 25145 Dec. 24, 1910.
Ry. owns and maintains.

INDEPENDENT FRUIT SHIPPERS
L.D. Cont. No. 22475 Aug. 20, 1928.
Ry. to own and maintain.

SPUR TRACK 374 LG.
L.D. Cont. No. 22475 June 20, 1929.
Ry. to own and maintain.

SPUR TRACK 798 LG.
L.D. Cont. No. 22475 July 10, 1929.
Ry. to own and maintain.

SPUR TRACK 374 LG.
L.D. Cont. No. 18964 Oct. 5, 1923.
G. N. Ry. Washington Coast Utilites
Ry. grants Wash. Coast Utilites
right to install gas mains under and
along the tracks over Ry. Co. R/W of Spokane
& Chelan Co. also several parcels of
Spokane St. Ry. Co. has right to grant easement
across Thurston St. in favor of easement across
Spokane St.



SOLD TO J.M. WADE - (See 144 Report)
Property of Spk. Coeur D'Alene & Palouse Ry. Co.
See Non-operating property report ending Dec. 31, 1940

Superseded yard map is 1342-31-3

GREAT NORTHERN RAILWAY
WILSON CREEK - PESHASTIN SECTION
WENATCHEE NO. 2
CHELAN CO., WASH.
SEC'S 3 & 10, T. 22 N., R. 20 E. V. 3

SCALE 1 IN. = 100 FT.
P/W. Map R803-4, Prof. 803-4
OCT. 1930.
Revised Jan. 1936.

C-4A
C-1
Wenatchee O.S.L.

63-19F

5-42