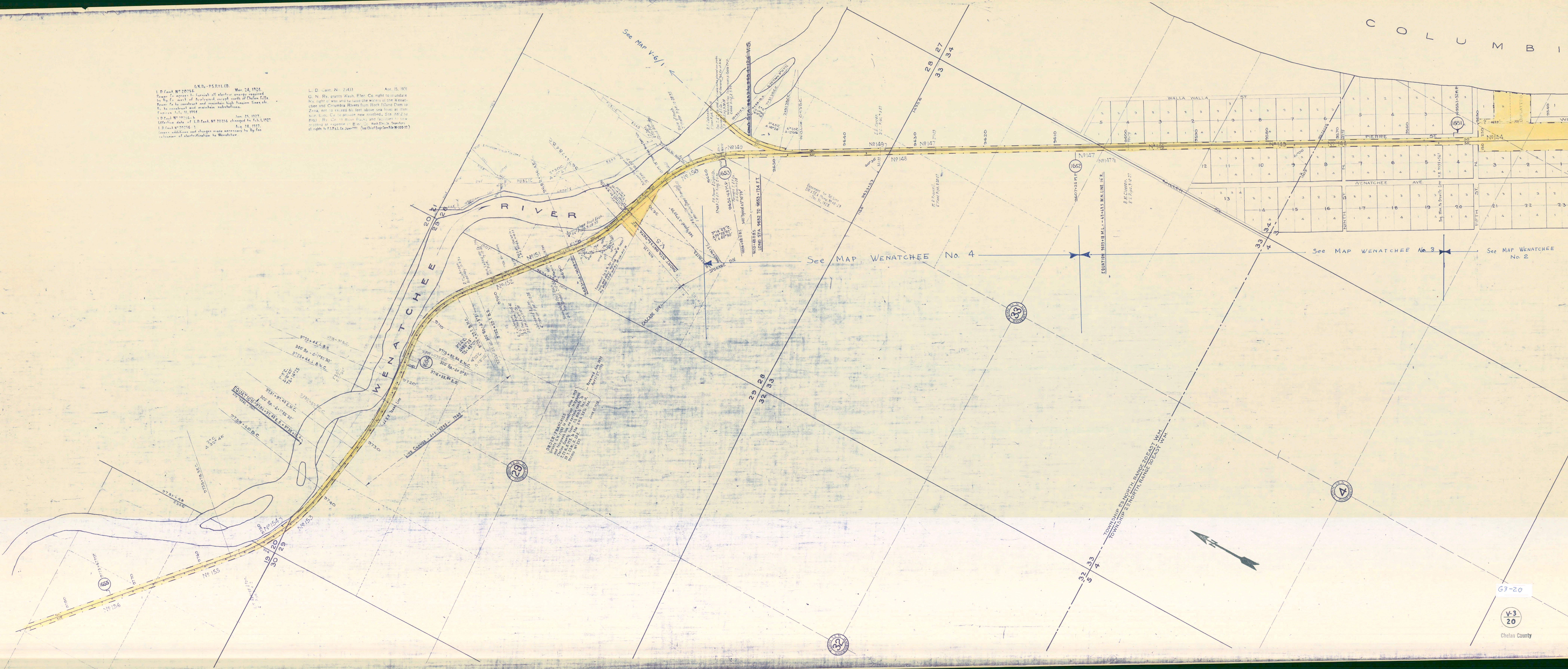


GNR-PSPTLCO Mar 28, 1928
 L.D. Cont. No. 20256
 Power to connect to furnish all electric energy required
 by the Co. west of Astoria, except south of Chelan Falls
 Dam, to be constructed and maintain high tension lines etc.
 to be installed and maintain substations.
 Francis July, 1928.

L.D. Cont. No. 2433 Aug 15, 1931
 G. N. Ry. grants Wash. Elec. Co. right to inundate
 the right of way and to utilize the waters of the Wenatchee
 and Columbia Rivers from Rock Island Dam to
 Zena, not to exceed 60 feet above sea level at any
 one time. Co. to provide new roadbeds 20' x 20' to
 20' x 3' Ry. Co. to move tracks and facilities to new
 roadbed at expense of Elec. Co. (See Chief Engineer's Report
 all rights to F.P. Co. June 1931) (See Chief Engineer's File #100-31)



See MAP WENATCHEE No. 4

See MAP WENATCHEE No. 3

See MAP WENATCHEE No. 2

63-20

V-3
20

Chelan County