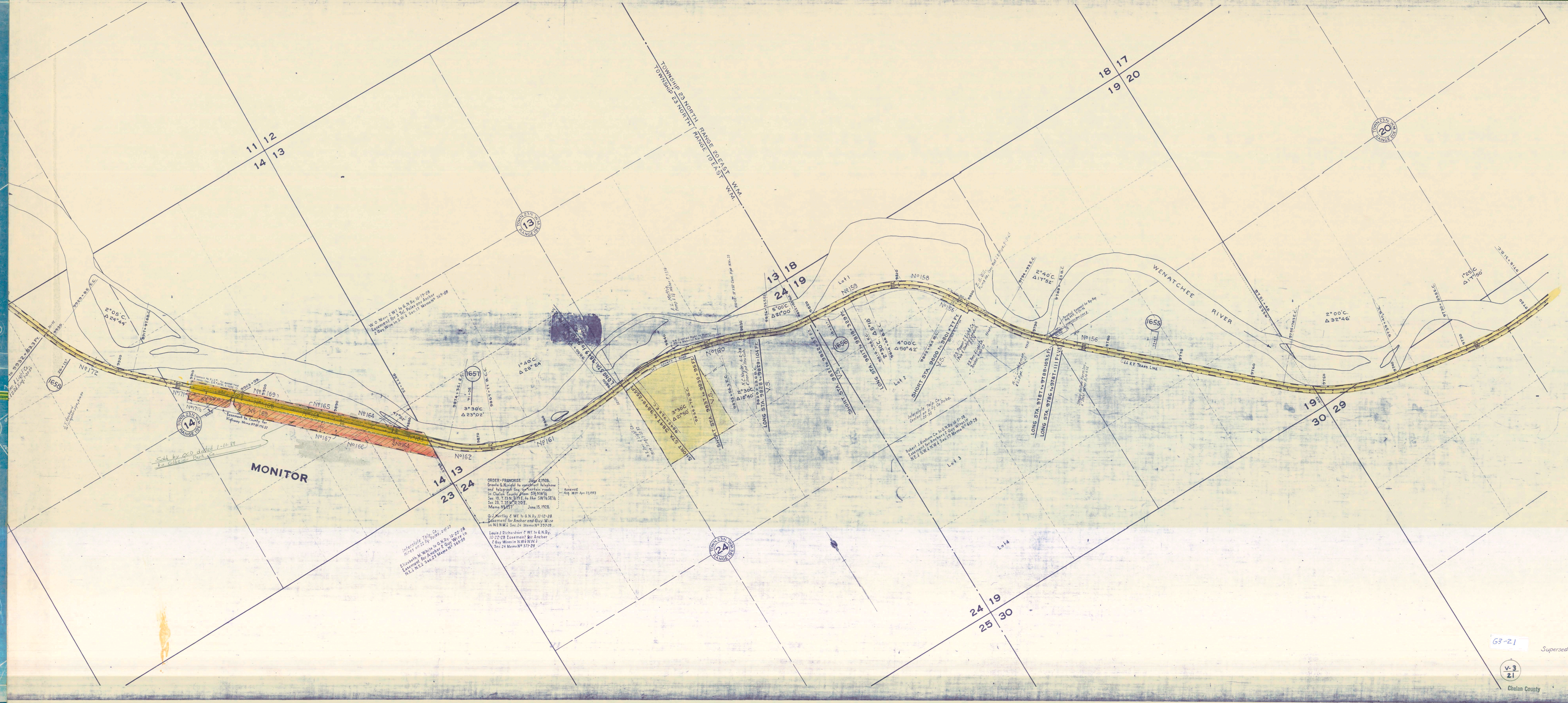


M-22

M-22

LONG ST. 9399 to 10000 - 103 FT.



11 12
14 13

13

13 18
24 19

18 17
19 20

20

19
30 29

14 13
23 24

24

24 19
25 30

MONITOR

WENATCHEE RIVER

1655

Sold by QED dated 1-11-39
to Glacier Park Co.

ORDER-FRANCHISE June 4, 1928.
Grants G. Wright to construct telephone
and telegraph line over certain roads
in Chelan County from SW 1/4 Sec. 10, T. 33 N., R. 20 E. to the SW 1/4 Sec. 14,
T. 33 N., R. 20 E.
Memo No. 1457 June 15, 1928.

O. J. Hartley & W. H. G. N. D., 11-12-28
Assessment for Anchor and Guy Wire
in NE 1/4 Sec. 24. Memo No. 557-28

Louis J. Richardson & W. H. G. N. D.,
10-22-28. Assessment for Anchor
& Guy Wires in NW 1/4 NW 1/4
Sec. 24. Memo No. 577-28

Interstate Tele. Co.
Wired on 22-24-28. Memo No. 249-28

Elizabeth M. White to G. N. D., 10-22-28
Assessment for Anchor & Guy Wire in
NW 1/4 NW 1/4 Sec. 24. Memo No. 580-28

63-21

v-3
21

Superseded maps

Chelan County