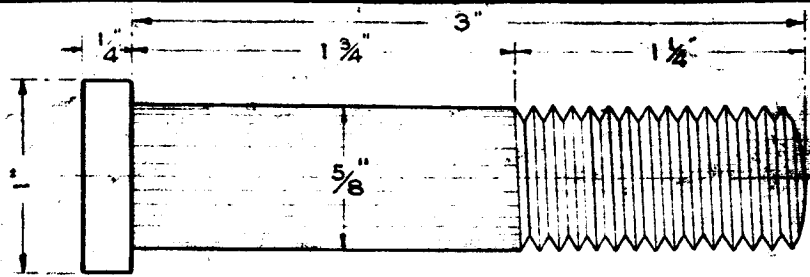


GNRHS Archives 2018

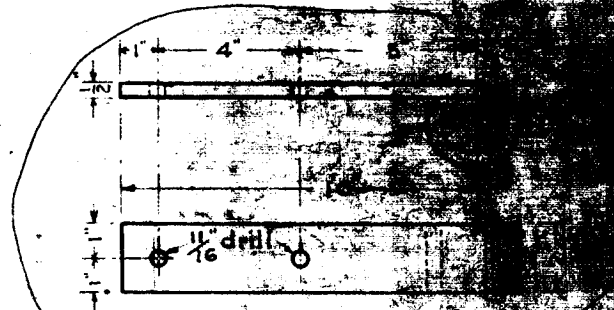
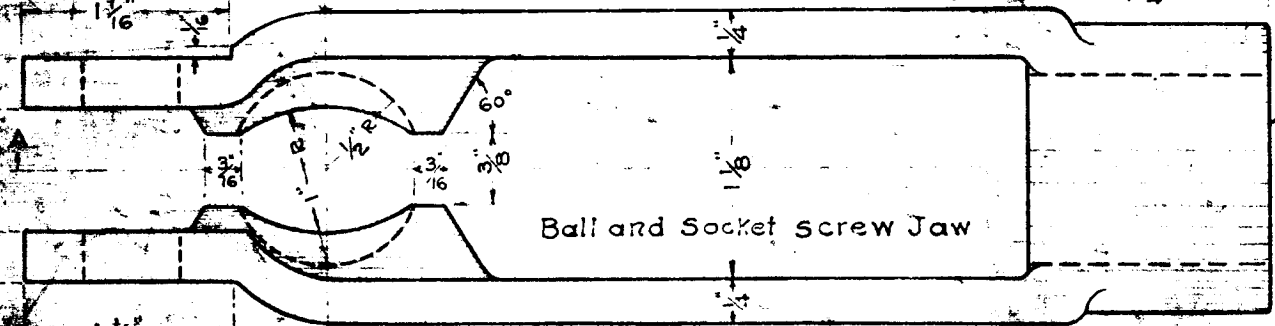
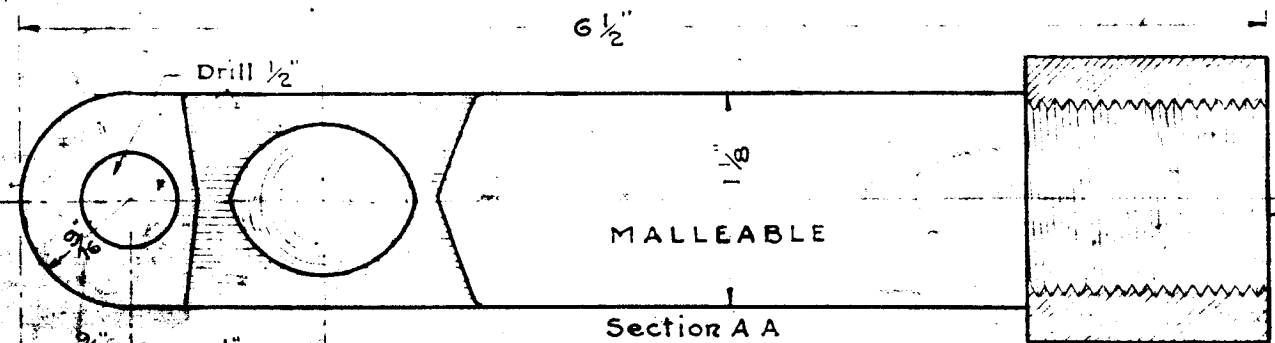


Bolt with 5/8" Hexagon Nut and Nut Lock Switch Lug to Point.

**G. N. RY.**  
**SWITCH BOX**  
**CONNECTING ROD & POINT LUG**  
 OFFICE OF SIGNAL ENGINEER  
 MAY 28 1913

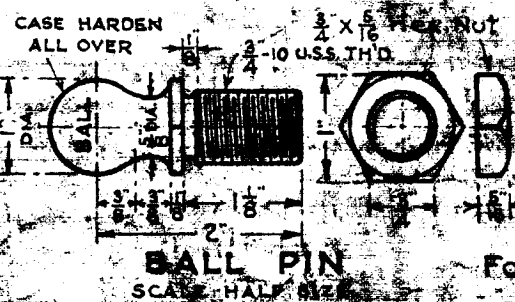
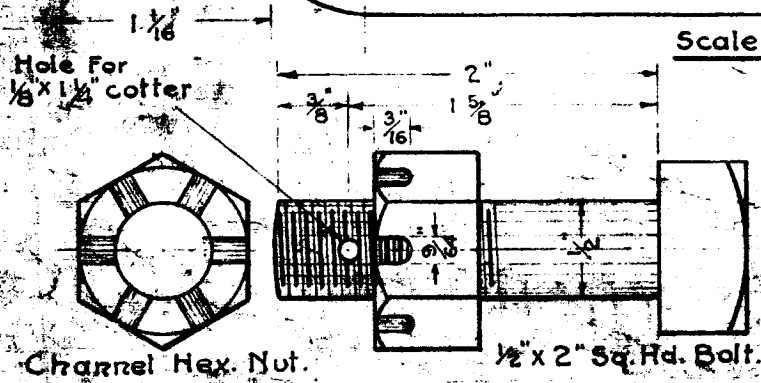
REVISED 12-12-16.

— Long Connecting Rod 9'-2"  
 - - Short " " 5'-6"

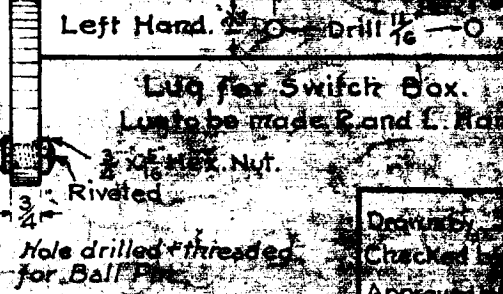
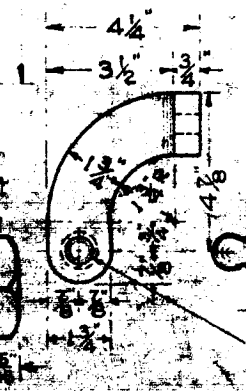


Guide

ONE TIE STAND A = 15 1/2  
 TWO TIE STAND A = 10 1/2



CASE HARDEN ALL OVER



FOR CONNECTION TO SWITCH SEE  
 DEC 167-10

Drawn by  
 Checked by  
 Approved by