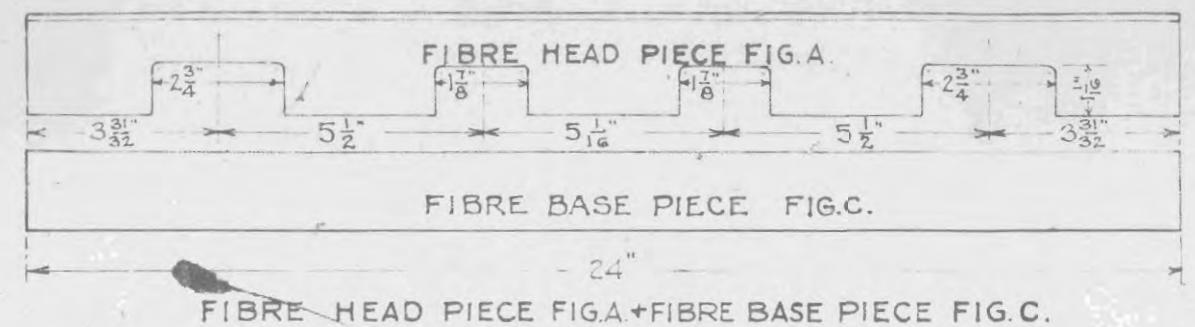
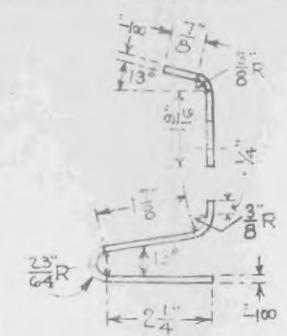


FIG. 1 FIG. 2

- 1ST. INSERT END POST, D, RAIL ENDS PRESSING FIRMLY AGAINST IT.
- 2ND. APPLY BASE FIBRES, C, TO BOTH SIDES OF THE RAILS. FIG. 1.
- 3RD. FIX METAL PLATES, X, LOOSELY IN POSITION FIG. 2.



FIBRE HEAD PIECE FIG. A.
FIBRE BASE PIECE FIG. C.
FIBRE HEAD PIECE FIG. A + FIBRE BASE PIECE FIG. C.



FIBRE END POST FIG. D.

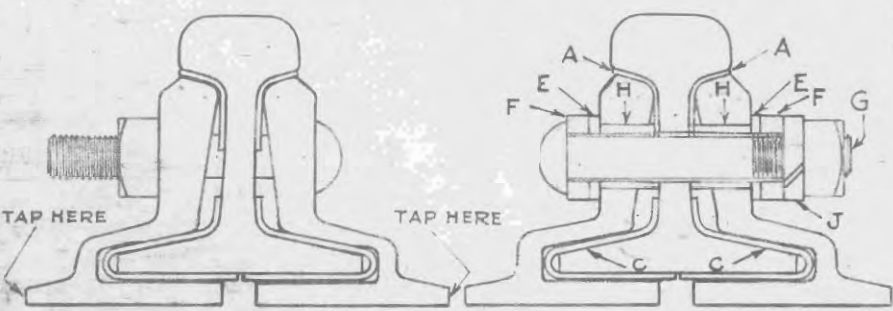
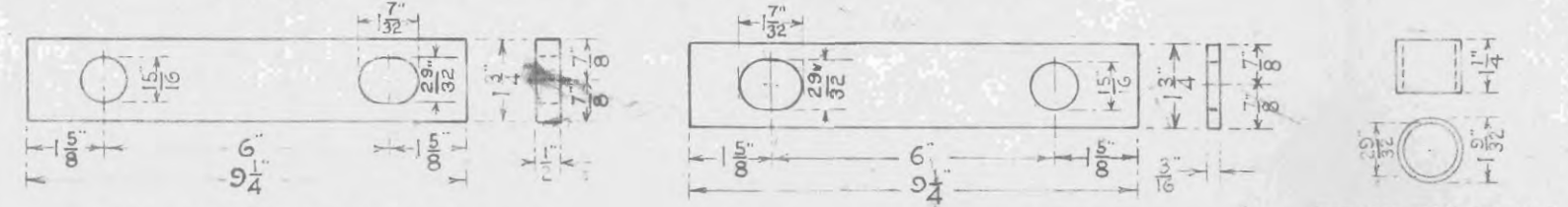
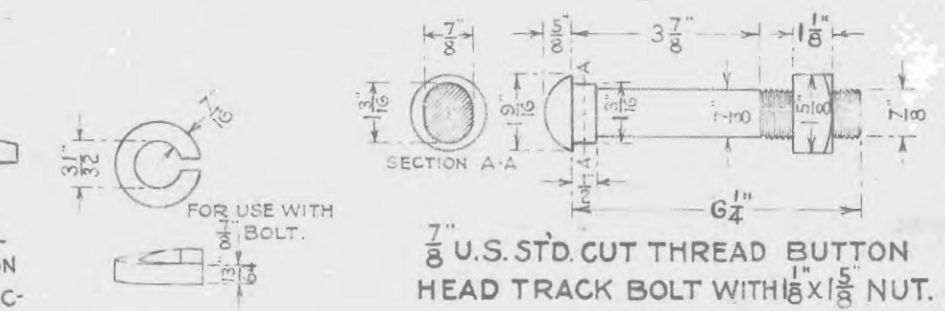


FIG. 3 FIG. 4

- 4TH. PLACE AND HOLD TOP FIBRE, A, IN POSITION AND DRAW METAL PLATES, X, TOGETHER, WITH TEMPORARY BOLTS, TO THE POSITION SHOWN IN FIG. 3. TAPPING LIGHTLY AT POINTS INDICATED IF NECESSARY.
- 5TH. REMOVE TEMPORARY BOLTS ONE AT A TIME, AND INSERT CAREFULLY BUSHINGS, H, WITH FIBRE PLATES, E, METAL PLATES, F, NUT LOCK, J, AND BOLTS, G, AS SHOWN BY FIG. 4, TIGHTENING NUTS PROPERLY.



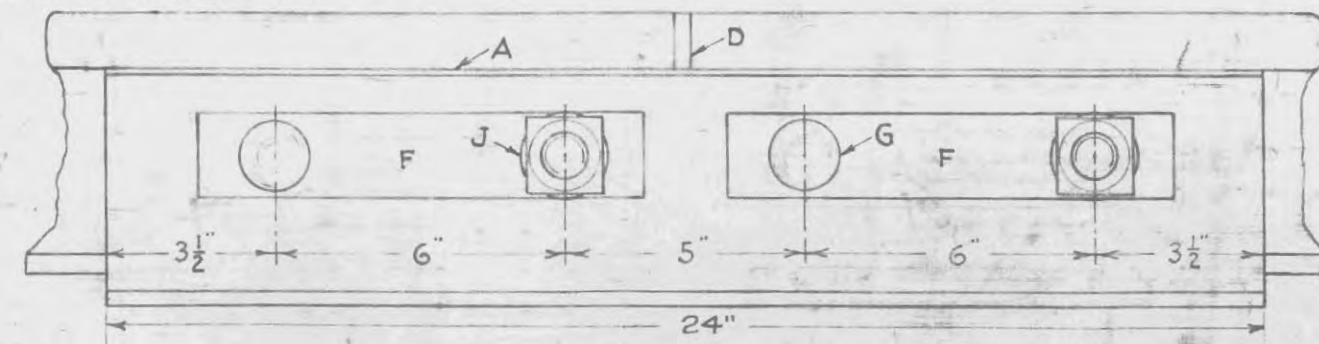
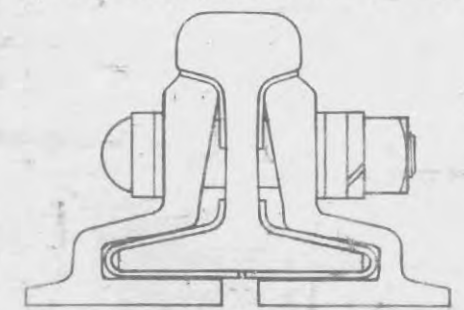
METAL WASHER PLATE FIG. F. FIBRE WASHER PLATE FIG. E. FIBRE BUSHING FIG. H.



7/8 U.S. STD. CUT THREAD BUTTON HEAD TRACK BOLT WITH 1/8 x 1/8 NUT. FIG. G.

HI-POWER NUT LOCK FIG. J.

MATERIAL TO BE IN ACCORDANCE WITH G.N. STD. SPEC. NO. 3304-15-1, 2 & 3. NOV. 6, 1922.



NOTE. THE FIBRE PARTS AS SHOWN HEREON SHALL BE OF A QUALITY EQUAL TO THE REQUIREMENTS OF THE SPECIFICATIONS OF THE RAILWAY SIGNAL ASSOCIATION, AND IN ADDITION SHALL BE WELL COATED WITH PARAFFINE, AND STAMPED WITH TRADE MARK OF MANUFACTURER.

SECTION FOREMEN ARE RESPONSIBLE FOR THE PROPER CARE OF INSULATED JOINTS. THE PROPER INSTALLATION AND MAINTENANCE OF INSULATED RAIL JOINTS HAS A MOST IMPORTANT BEARING ON THE OPERATION OF ALL SIGNAL APPARATUS CONTROLLED BY ELECTRIC TRACK CIRCUITS. IT IS THE DUTY OF SIGNAL REPAIRMEN TO SECURE AND KEEP ON HAND SUFFICIENT FIBRE AND METAL REPAIR PARTS TO PROPERLY MAINTAIN THE INSULATED JOINTS IN THEIR TERRITORY FOR A PERIOD OF SIXTY DAYS. THEY WILL MAKE FREQUENT INSPECTIONS OF ALL INSULATED RAIL JOINTS AND WILL SUPPLY SECTION FOREMEN WITH REPAIR PARTS AS REQUIRED.

SECTION FOREMEN WILL ALSO MAKE FREQUENT INSPECTIONS OF ALL INSULATED RAIL JOINTS, OBTAINING FROM THE SIGNAL REPAIRMAN NECESSARY REPAIR PARTS, AND MAKE REPAIRS PROMPTLY. RAILS WITH SAWED ENDS ONLY, SHALL BE USED WITH INSULATED JOINTS. SHARP PROJECTIONS SHALL BE CAREFULLY CHIPPED OFF AT ALL PLACES WHERE THEY COME IN CONTACT WITH FIBRE PARTS. ANTI-CREEPERS SHALL BE USED ON EACH SIDE OF INSULATED RAIL JOINTS AND IN ALL CASES INSULATED JOINTS SHALL BE SUPPORTED ON TWO GOOD TIES, WHICH MUST BE KEPT WELL TAMPED.

REQUISITION FOR REPAIR PARTS FOR INSULATED JOINTS SHALL STATE WEIGHT OF RAIL, TYPE OF JOINT, REFERENCE LETTER ON, AND DRAWING NUMBER OF PLAN ILLUSTRATING THIS TYPE. ALL CONCERNED WILL BE GOVERNED ACCORDINGLY.

NOTE A. REVISED DEC. 5, 1919. LENGTH OF FIBRE PLATE CHANGED FROM 9 1/2 TO 9 1/4.
NOTE B. WIDTH OF FIBRE E CHANGED FROM 1 7/8 TO 1 3/4. ONE HOLE IN PLATE SHOWN ELONGATED TO SHOW FIBRE DETAILS.

NOTE. REDRAWN SEPT. 1919 TO SHOW FIBRE DETAILS.

Drawn By: *H. H.*
Checked By: *F. R.*
Approved By: *E. S.* SIGNAL ENGR.

12-23-25	2-18-24	2-14-1920	12-5-1919	SEPT. 1919	REVISED.
	9-23-24	SEE NOTE B.	SEE NOTE A.	REDRAWN TO SHOW FIBRE DETAILS.	

APPROVED *H. M. Mogelland* CHIEF ENGINEER.

APPROVED *W. J. ...* VICE PRESIDENT.

167-31A