

FIG. 1

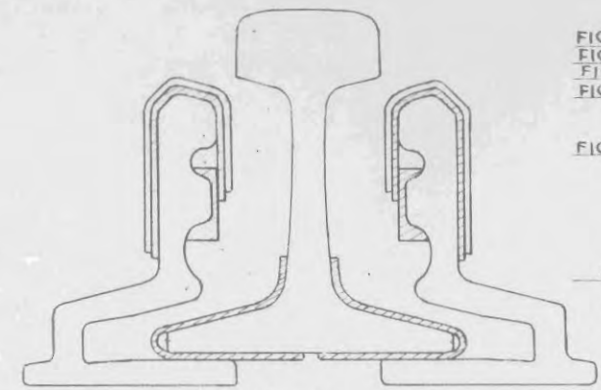


FIG. 2

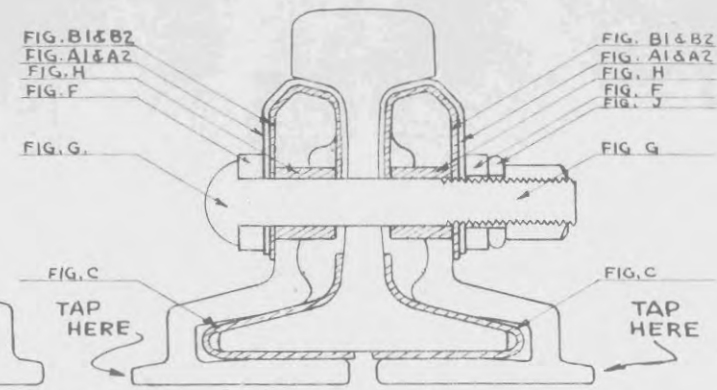
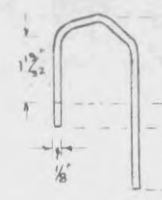
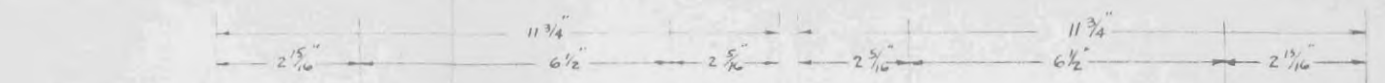
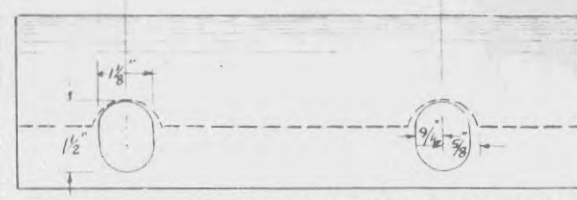


FIG. 3

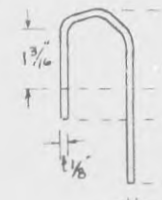
- 1st. Insert end post "D," rail ends pressing firmly against it.
- 2nd. Apply base fibers, "C," to both sides of rail, "fig. 1"
- 3rd. Fix angle bars in position "fig. 2"
- 4th. Insert fiber bushings "H," in angle bars.
- 5th. Apply fiber head pieces "B1 and B2," and steel head pieces "A1 and A2," "fig. 2"
- 6th. Assemble metal washer plates "F," spring washers "J," and bolts "G," as shown by "fig. 3," tightening nuts properly, tapping lightly at points indicated if necessary.



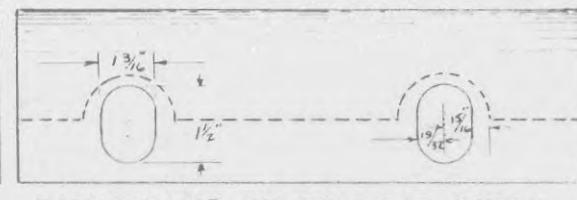
LEFT HAND STEEL HEAD PIECE
FIG. A1



RIGHT HAND STEEL HEAD PIECE
FIG. A2



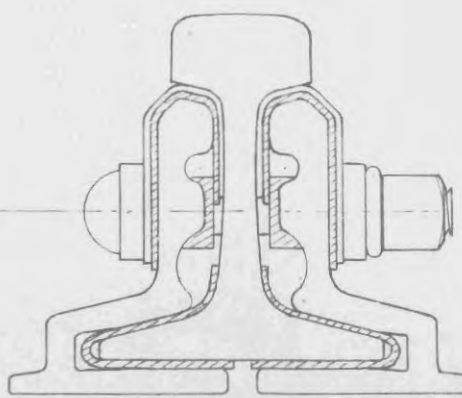
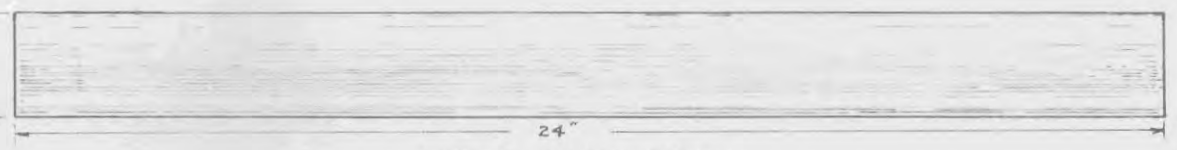
LEFT HAND FIBER HEAD PIECE
FIG. B1



RIGHT HAND FIBER HEAD PIECE
FIG. B2



FIBER BASE PIECE
FIG. C



ASSEMBLY

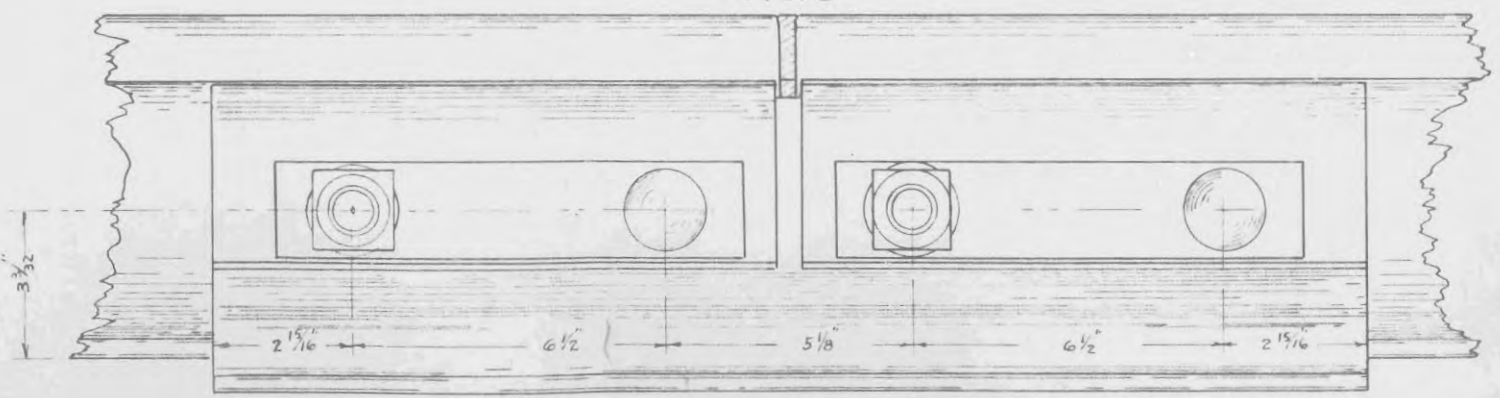
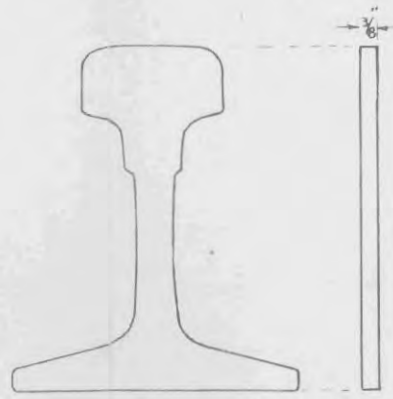
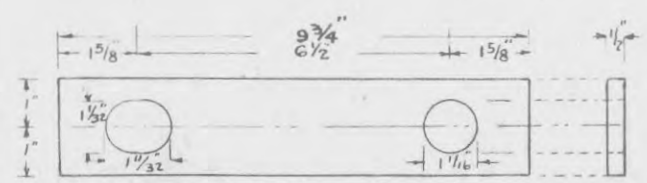


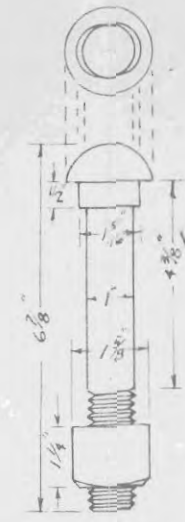
FIG. D



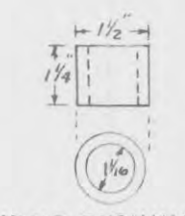
FIBER END POST
FIG. D



STEEL WASHER PLATE
FIG. F



BUTTON HEAD BOLT
FIG. G



FIBER BUSHING
FIG. H



IMP. HI-POWER SPRING WASHER FOR 1" BOLT
FIG. J

G. N. RY.
PLAN OF STANDARD
**ARMORED CONTINUOUS
INSULATED RAIL JOINT**
R. E. 131 LB.

WITH INSTRUCTIONS FOR INSTALLATION AND MAINTENANCE

OFFICE OF SUPT. OF SIGNALS. ST. PAUL MINN.

SCALE IN. 1 IN. SEPT. 15, 1944

Section foreman are responsible for the proper care of Insulated Joints.

The proper installation and maintenance of Insulated Rail Joints has a most important bearing on the operation of all signal apparatus controlled by electric track circuits.

It is the duty of signal Repairmen to secure and keep on hand sufficient fiber and metal repair parts, to properly maintain the insulated joints in their territory for a period of sixty days, they will make frequent inspections of all insulated rail joints, and will supply section foremen with repair parts as required.

Section foreman will also make frequent inspections of all insulated rail joints, obtaining from the signal repairmen necessary repair parts, and make repairs promptly.

Rails with sawed ends only, shall be used with insulated joints.

Sharp projections shall be carefully chipped off at all places where they come in contact with fiber parts. Anti-creepers shall be used on each side of insulated rail joints and in all cases insulated joints shall be supported on two good ties which must be kept well tamped.

Requisition for repair parts for insulated joints, shall state, weight of rail, type of joint, reference letter on, and drawing no. of, plan illustrating this type.

All concerned will be governed accordingly.

NOTE: *The fiber parts as shown hereon shall be of a quality equal to the requirements, of the specifications of the A.A.R. And in addition shall be well coated with paraffin and stamped with Trade Mark of manufacturer.*

NOTE: *Furnish 2 abrasion plates RAIL JOINT CO'S. templet #92141 punched as per. file No. 3005-21 issue #2 dated Feb. 15, 1932.*

DRAWN BY R.A.J.-R.W.
CHECKED BY <i>R.A.J.</i>
APPROVED BY <i>H.E.S.</i>
SUPT. OF SIGNALS
SEPT. 14 1944
167-31 J