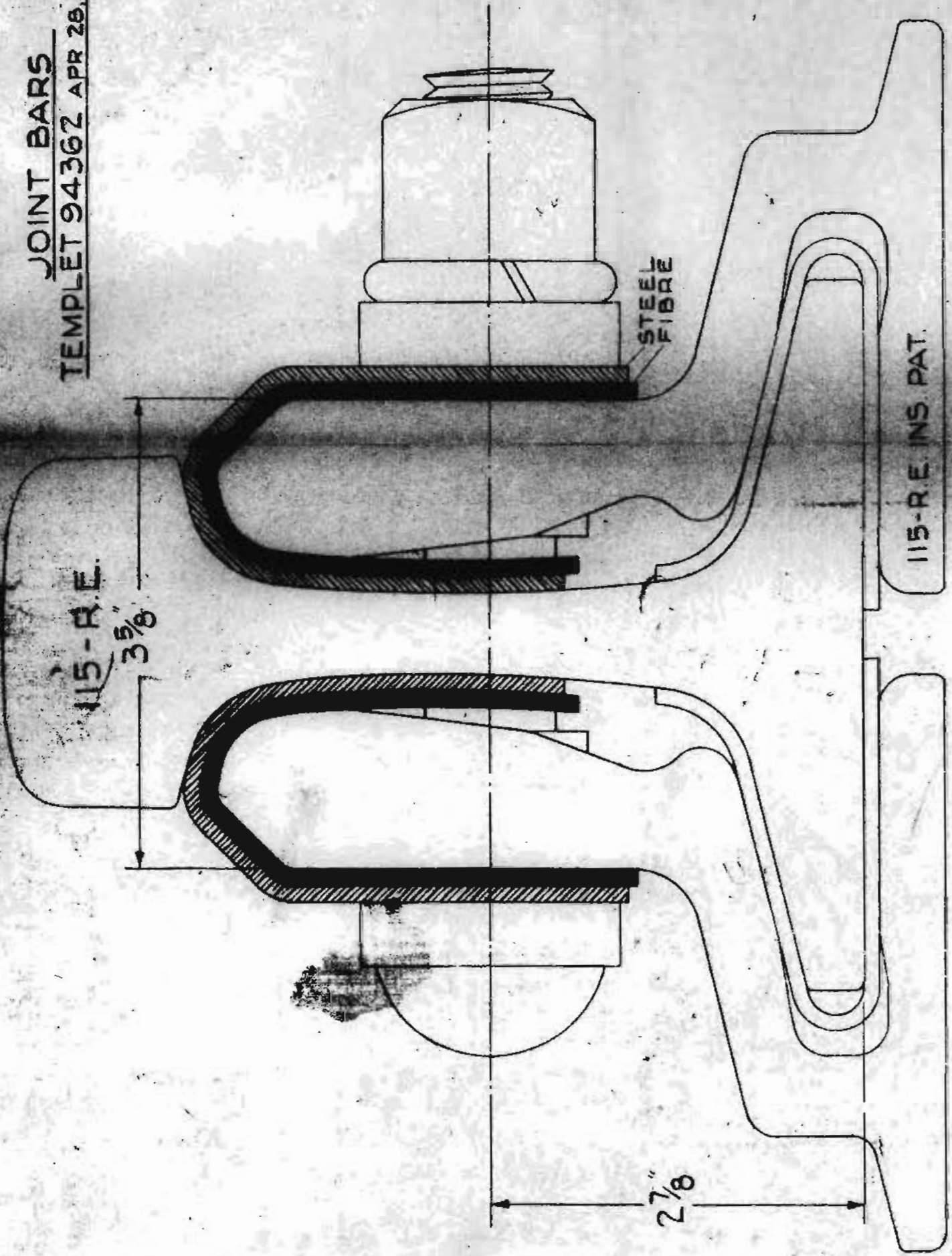
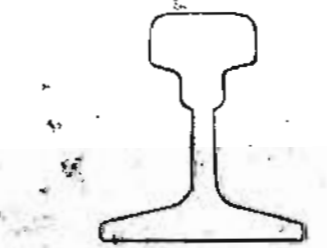
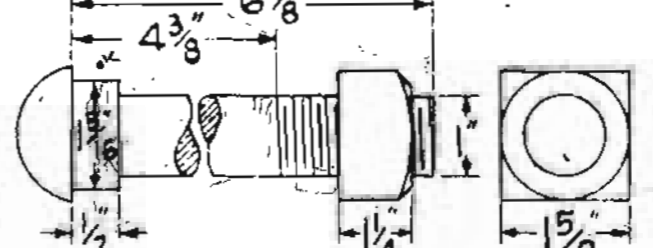
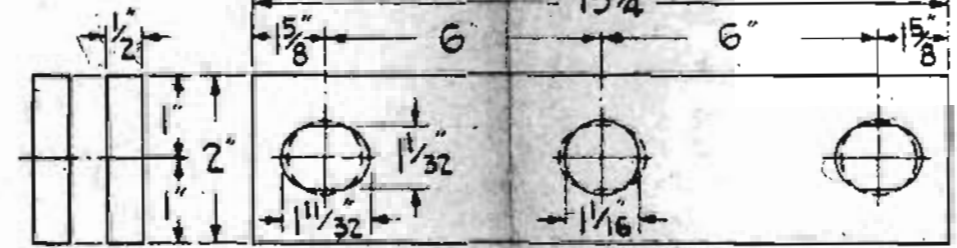
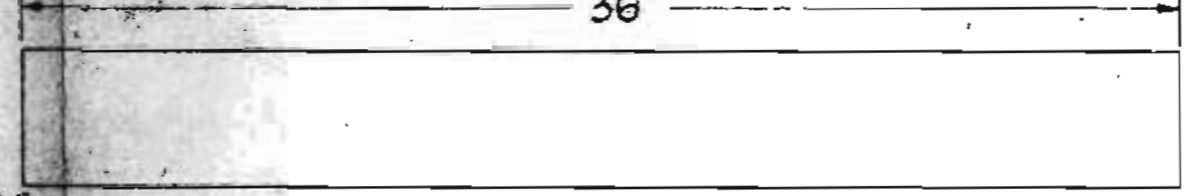
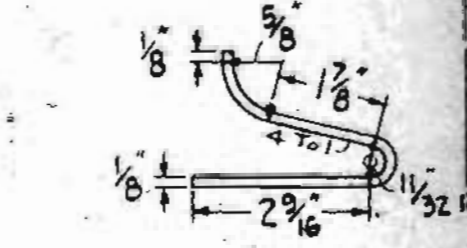
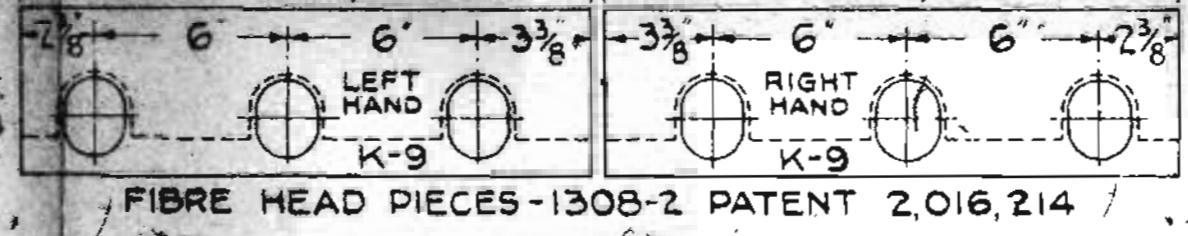
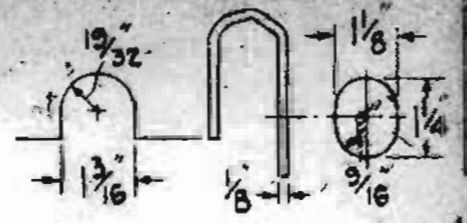
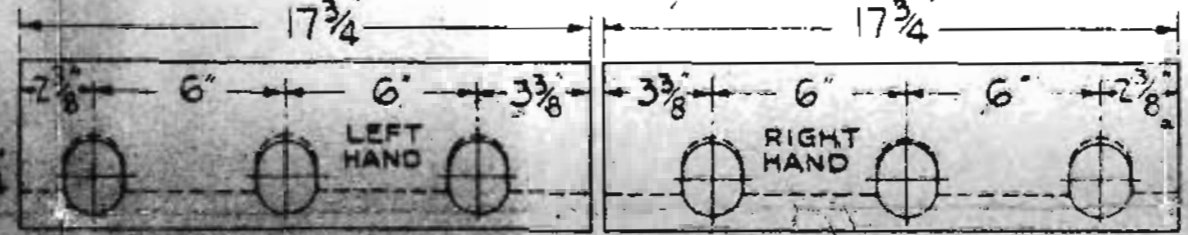
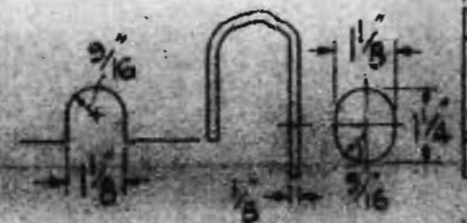
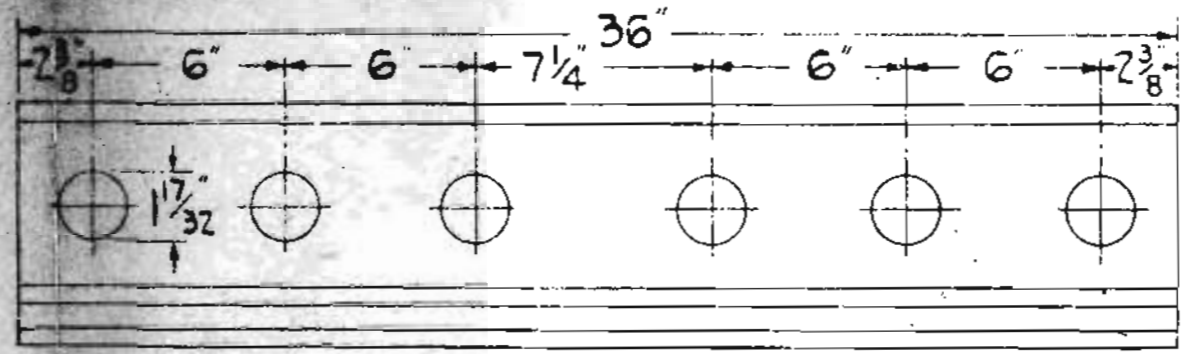


JOINT BARS
 TEMPLET 94362 APR 28, 1947



ASSEMBLE JOINTS
 WITH NUTS
 ALTERNATE



3M BOLT
 1 1/4 DIA.
 EQUAL UNDER HEAD

1 1/2 1 3/8

1 1/2 1 3/2 9/16

1 1/2 1 3/2 9/16

G.N.R.Y.
 PLAN OF STANDARD
 ARMORED CONTINUOUS
 INSULATED RAIL JOINT
 R. E. 115 LB.
 WITH INSTRUCTIONS FOR INSTALLATION AND MAINTENANCE
 OFFICE OF SUPT. OF SIGNALS ST. PAUL, MINN.
 FEB. 7, 1948

Section foreman are responsible for the proper care of Insulated Joints.
 The proper installation and maintenance of Insulated Rail Joints has a most important bearing on the operation of all signal apparatus controlled by electric track circuits.
 It is the duty of signal Repairmen to secure and keep on hand sufficient fiber and metal repair parts, to properly maintain the insulated joints in their territory for a period of sixty days, they will make frequent inspections of all insulated rail joints and will supply section foreman with repair parts as required.
 Section foreman will also make frequent inspection of all insulated rail joints, obtaining from the signal repairmen necessary repair parts, and make repairs promptly.
 Rails with sawed ends only, shall be used with insulated joints.
 Sharp projections shall be carefully chipped off at all places where they come in contact with fiber parts.
 Anti-creeper shall be used on each side of insulated rail joints, and in all cases insulated joints shall be supported on two ties which must be kept well-tamped.
 Requisition for repair parts for insulated joints shall state, weight of rail, type of joints, reference letter on drawing No. of plan illustrating this type.
 All work shall be governed accordingly.

Note: The fiber parts as shown hereon shall be of a quantity equal to the requirements, of the specifications of the A. I. R. And in addition shall be well coated with paraffin and stamped with Trade Mark of manufacturer.
 Note: Furnish 3 abrasion plates Red Joint Company 1948 punched as per file No. 300-30 issue 2 dated Nov. 5, 1932.

REVISED
 DRAWN BY
 CHECKED BY
 APPROVED BY
 DATE